

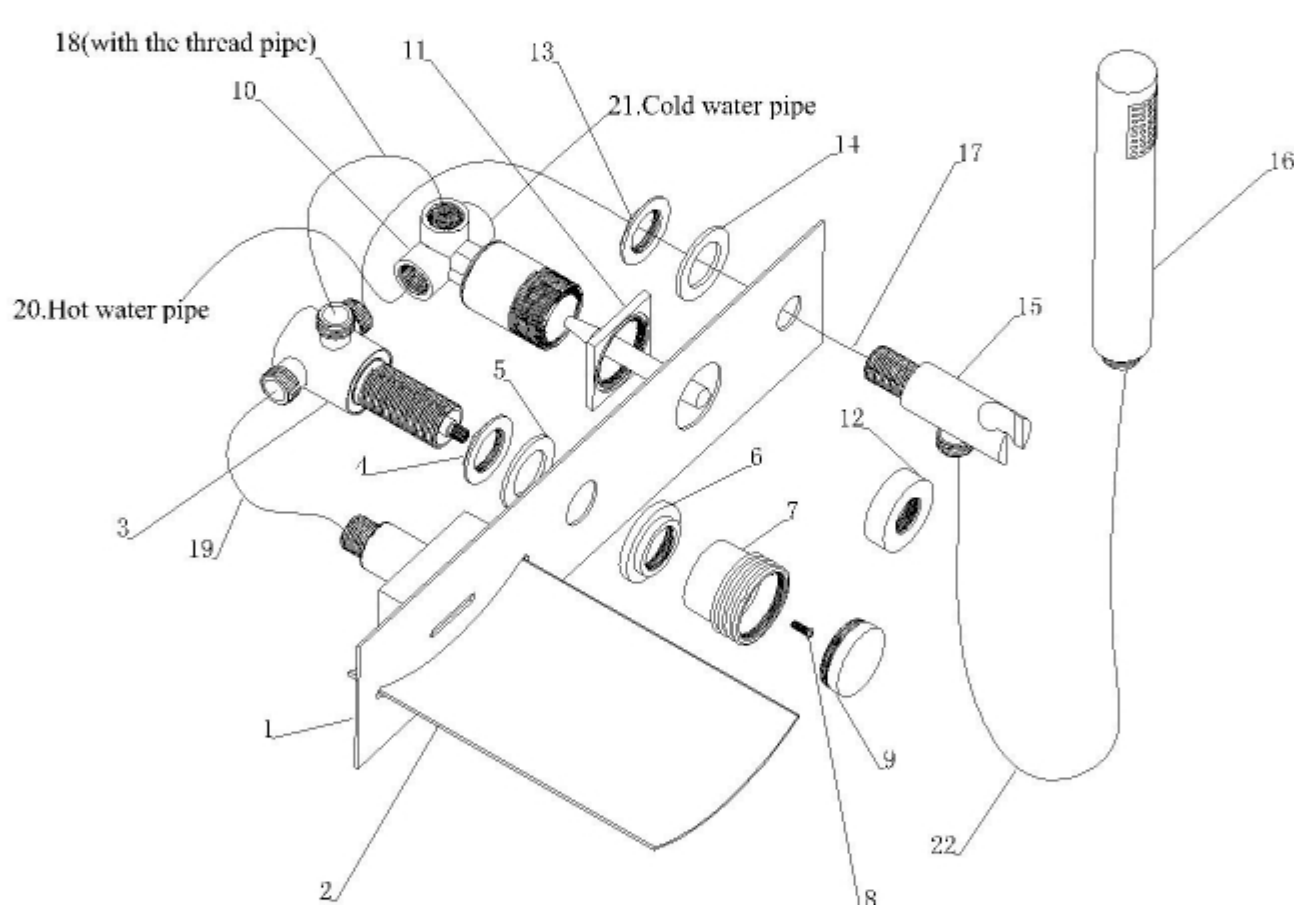
# Modern Wal Mount with Pullout Hand Shower Bathtub LED Waterfall Faucet



## INSTALLATION INSTRUCTIONS

### Installation Instructions:

1. Connect the flexible hoses (20) & (21) to the cold and hot water inlet.
2. Assemble the valve (3) with the handle (7) on the decoration board (1) through the nut (4), washer (5), screw decorative base (6), screw (8) and cap (9).
3. Assemble the valve (10) with the decorative cap (12) on the decoration board (1) through the nut (11).
4. Assemble the hand shower holder base (15) with decoration board (1) through washer (14) and screw nut (13).
5. Connect the pipes between (17), (18), (19) and (22) according to the picture.



### JS151BTF

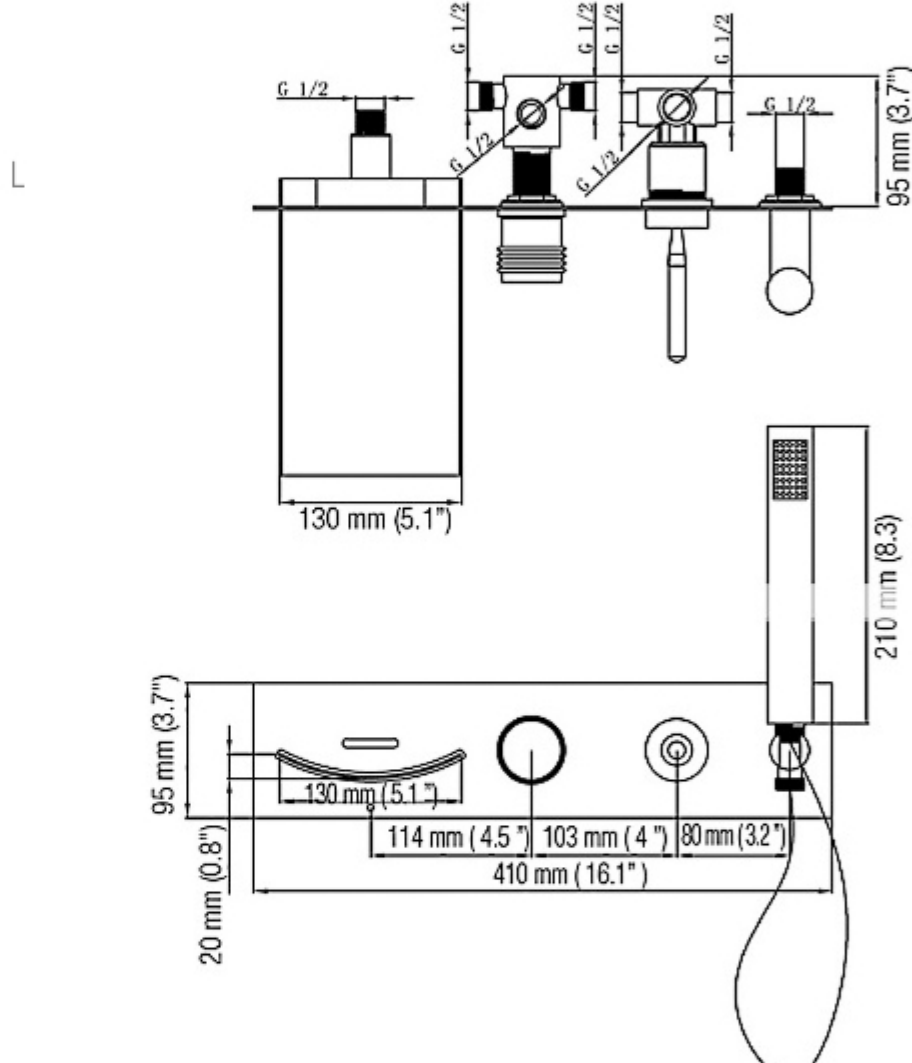
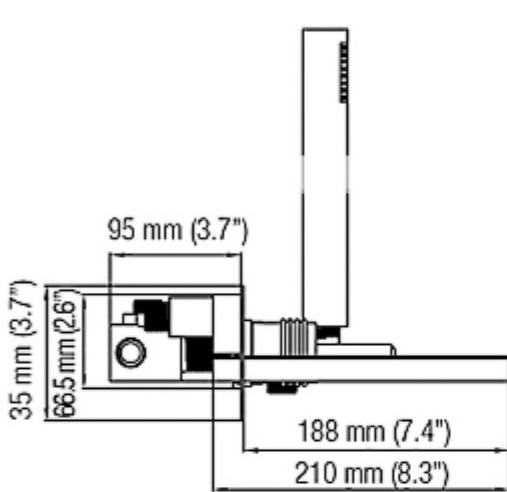
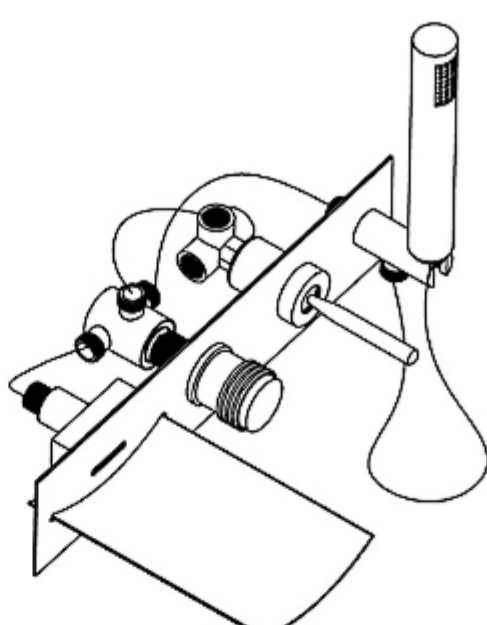
Specifications		
Name	Size	Quantity
Spout		1
Nut		4
Threaded rod		2
G <sub>2</sub> <sup>1</sup> -G <sub>2</sub> <sup>1</sup> hose	0.5m	3
G <sub>2</sub> <sup>1</sup> -G <sub>2</sub> <sup>1</sup> connector		1
Washer	φ15. 5xφ8. 5x2mm	7
Hand-held showerhead		1
Shower hose	1.5m	1
Installation instruction		1

### Maintenance

- (1)Clean the faucet with soft cloth or leather. Regular cleaning can prevent calcification.
- (2)Never use cleaning materials contain hydrochloric, formic, phosphoric or acetic acid, which may cause considerable damage.
- (3)After cleaning, rinse thoroughly the faucet with clean water to remove any cleaner residue.

### Warranty

Faucets have a 3 years warranty.



#### Dimensions

Overall Height	41 cm x 9.5 cm x 9.5 cm (16 " x 3.74 " x 3.74 ")
Spout Height	9.5 cm (3.74 ")
Spout Width	13 cm (5 ")
Spout Length	21 cm (8.3 ")
Faucet center	1 to 3 Inches

#### Material

Faucet Handle Material	Zinc Alloy
Handshower Material	Brass
Faucet Body Material	Brass
Faucet Spout Material	Brass

#### Accessories Information

Handshower Included	Yes
Valve Included	Yes
Drain Included	No

This General diagram and installation instructions are not intended for any specific model, but is presented as a general guideline for Installations!