

Wide Spread Bathroom Bathtub Bath-Tub LED Waterfall Faucet with Hand-Shower



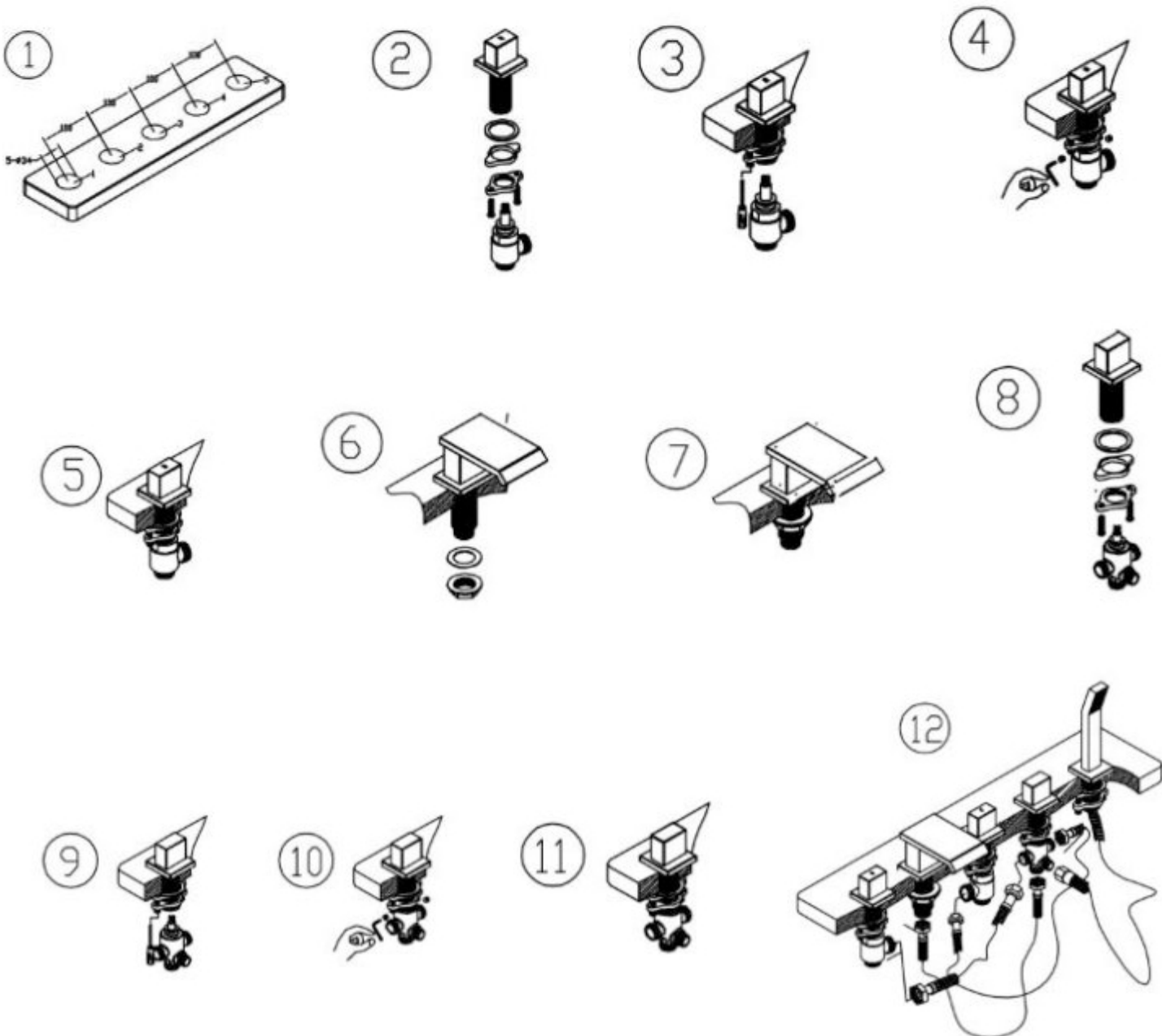
INSTALLATION INSTRUCTIONS

INSTALLATION FOR 5-HOLE DECK MOUNTED BATH SHOWER MIXER PREVIEW OF INSTALLATION PRECEDURES

Please retain this manual after installation for future reference and maintenance.

Product must be installed in compliance with relevant Water Regulations and Byelaws

! IMPORTANT
Always check for wires and pipes prior to any drilling.
Flush the system prior to installation



Product Specification

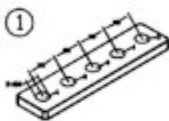
Minimum Pressure 2.0 Bar
1/2" threaded tail
1/2 turn ceramic disc valves

Cleaning

The product should be cleaned using a soft damp cloth, no abrasive agents or materials must be used, or this will invalidate your guarantee.

INSTALLATION PRECEDURES:

STEP 1: Drill five holes on the bath as per the drawing shown below.



Step 3: Assemble all the components together as shown below.
Tighten the screw with screw driver.



Step 2: Get all the components below ready for hole No.1.



Step 4: Tighten the cartridge with allen key.



Step 5: Hole NO.1(hot valve) is installed as per the drawing below; Hole NO. 3 (cold valve) will follow the same procedures.



Step 6: Get all the components in place for hole No. 2 (spout).



Step 7: Tighten the spout with backnut and rubber washer.



Step 8: Get all the components below ready for hole No.4 (divertor valve)



Step 9: Assemble all the components together as shown below.
Tighten the screw with screw driver



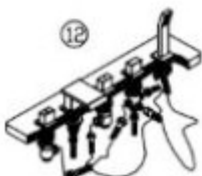
Step 10: Tighten the divertor cartridge with allen key.



Step 11: Hole NO.4 (divertor valve) is installed as per the drawing shown below.



Step 12: Connect handshower to divertor valve with handshower; Connect hot valve, cold valve and spout to divertor valve with flexible tails. Finally check for leaks.



This General diagram and installation instructions are not intended for any specific model, but is presented as a general guideline for Installations!