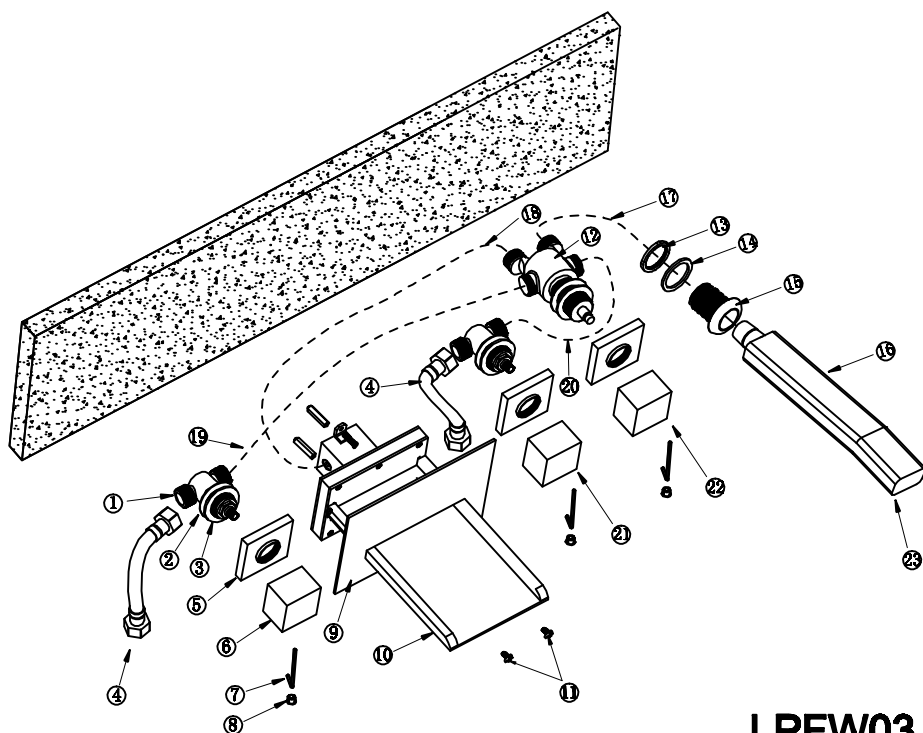


Installation steps:

1. Fix the water trap (1) , (12) into the wall.
2. Use the hex wrench to surew the handle (6) with the water trap (1) through decorative cap (5) ,washer (3) and the nut (2) .
3. Use the same way to a ssemble part (21) ,(22) , (23) .
4. Fix part (10) on the wall by screw and keeping it horizontal, cover the decorative board (9) and fix it with screw .
5. Connecting the hose (4) to cold and hot water inlet (part 1) , the other end of the hoses connelt to hte cold and hot water supply system.
6. Connecting the other connection pipes according the picture.



LPFW03

Specifications

Name	Size	Quantity
Decorative base		1
Washer	Ø48.5xØ33x2mm	1
Nut		4
Thread pipe	M32x1.5mm	1
Distributor		2
Washer		2
Decorative cap for output		3
Handle		3
Wrench		1
Output with 4 distributors		1
Hand shower		1
Holder		1
Washer		1
M10x1—G $\frac{1}{2}$ hose	500mm	1
G $\frac{1}{2}$ —G $\frac{1}{2}$ hose	500mm	3
G $\frac{1}{2}$ —G $\frac{1}{2}$ hose	600mm	1
G $\frac{1}{2}$ andG $\frac{3}{8}$ connector		2
Connectors changed instruction		1
Washer	Ø15.5xØ8.5x2mm	2
Installation instruction		1
Flexible hose	1500mm	1

Maintenance

- Use clean water to wash the faucet , and use a soft cloth or leather to wipe it.
- Don't use acidic washing liquid or abrasive materials to wash the faucet.

Warranty

The whole faucets have a 5 years warranty.
Led part has 1 years warranty.