

JUNO QUINN FREE STANDING SHOWER HEAD WITH BATHTUB FAUCET AND HAND SHOWER SYSTEM INSTALLATION INSTRUCTIONS



BEFORE YOU BEGIN

Before you begin, please read the installation instructions below. Observe all local building and safety codes.

Unpack and inspect the items for any shipping damages. If you find damages, do not install.

Please note all products must be installed by a professional and certified plumber otherwise warranty might be voided.

POSSIBLE TOOLS REQUIRED*



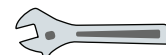
Plumbers Tape



Tape Measure



Level



Adjustable Wrench



Hex Wrench



Thread Sealant



Drill



Pencil or Marker



Screwdriver

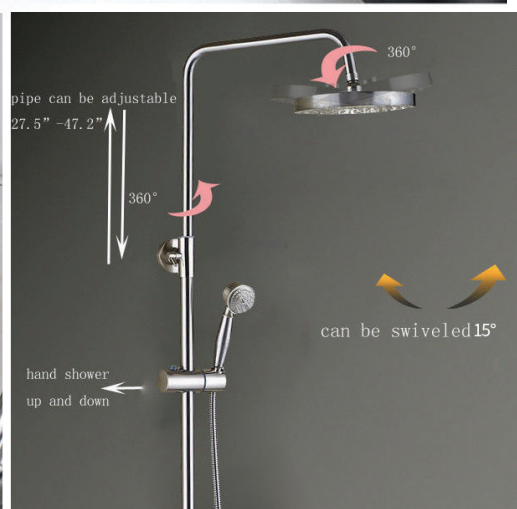
*not included

FEATURES

Type: Bath & Shower Faucet, tub faucet with hand shower
 Finish: chrome, brushed nickel, antique brass, golden
 Surface Finishing: Galvanized
 Style: Classic
 Feature: Cold and Hot
 Number of Handles: Double Handle
 Type of Hot / Cold Water Control : Dual Control with Dual Support
 Main Valve Material: Ceramic
 Installation Type: floor mounted
 Bath & Shower Faucet Type: free standing



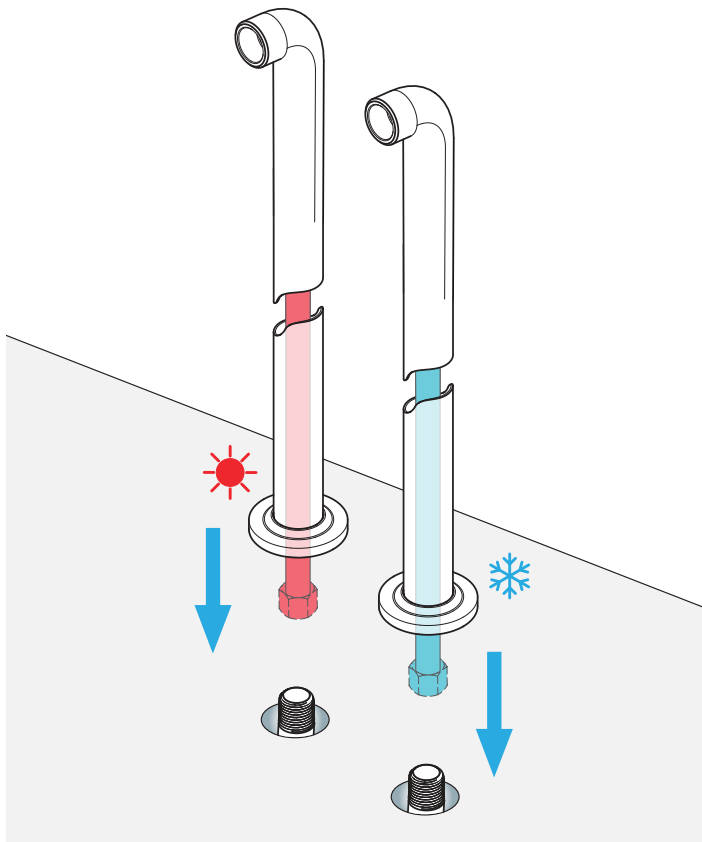
Water Pipe Connections



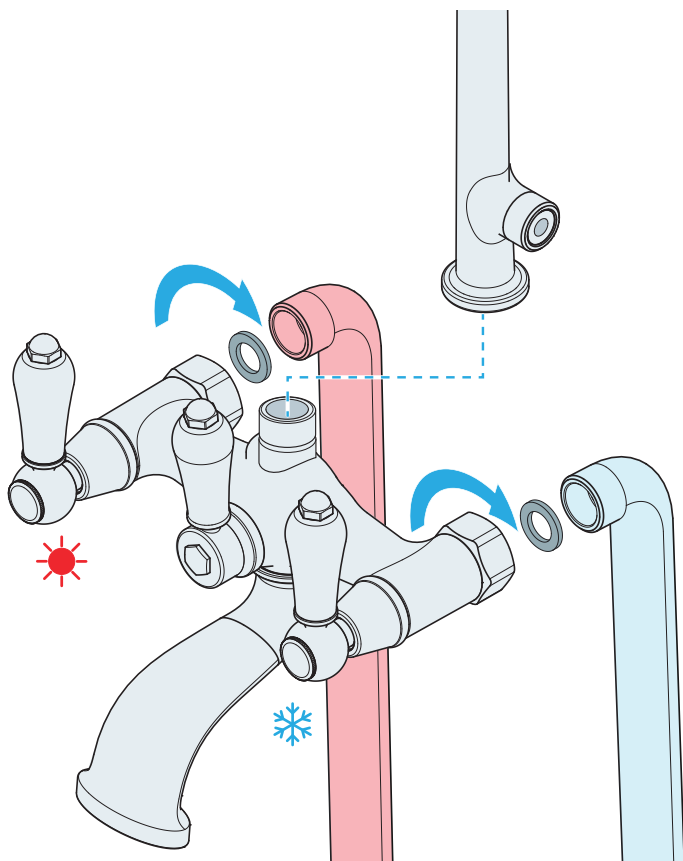
All dimensions and specifications are nominal and may vary. Use actual products for accuracy in critical situations.

Installation Instruction

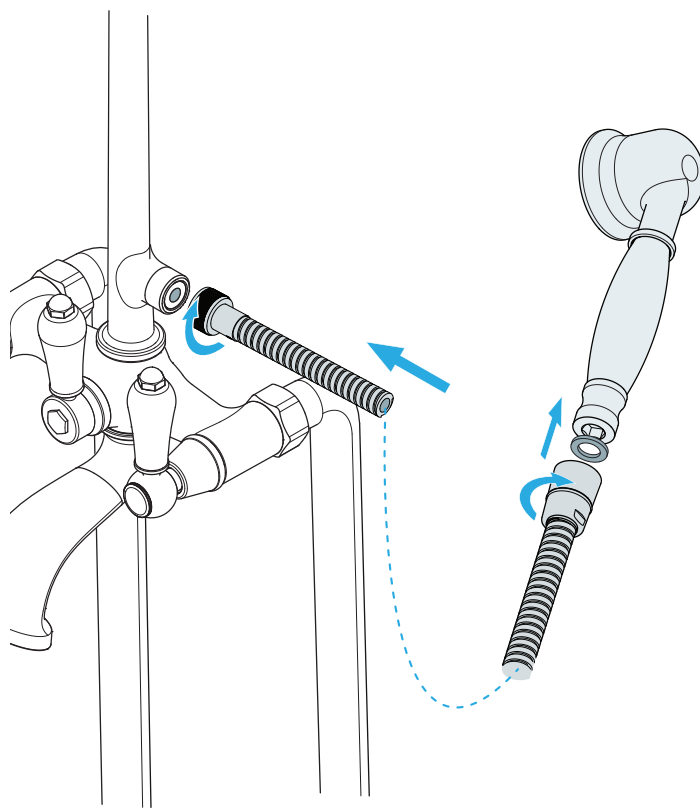
1. Insert the bottom cover plate and connect the shower legs to the Hot & Cold water supply lines.



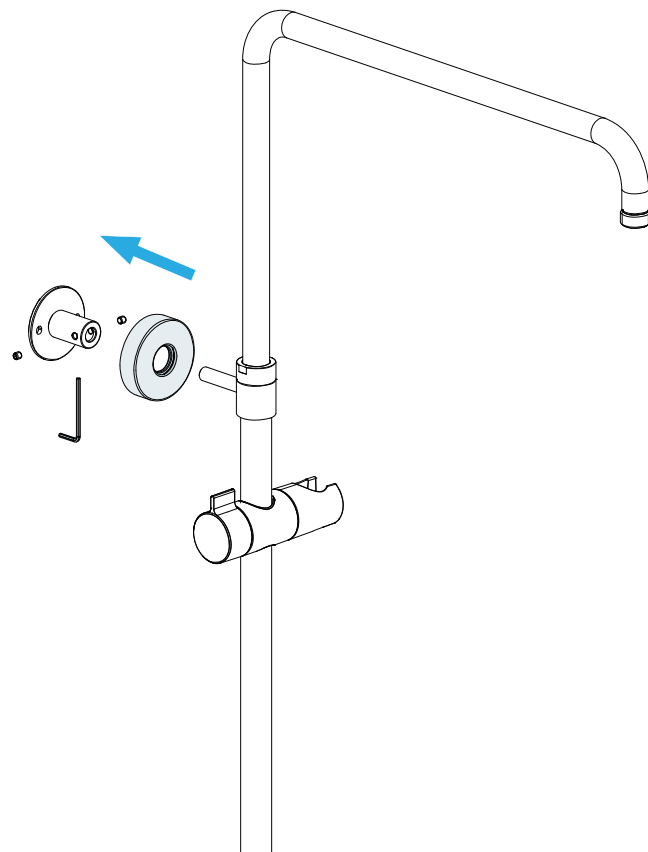
2. Connect the shower faucet to the shower legs. Connect the shower rail to the faucet.



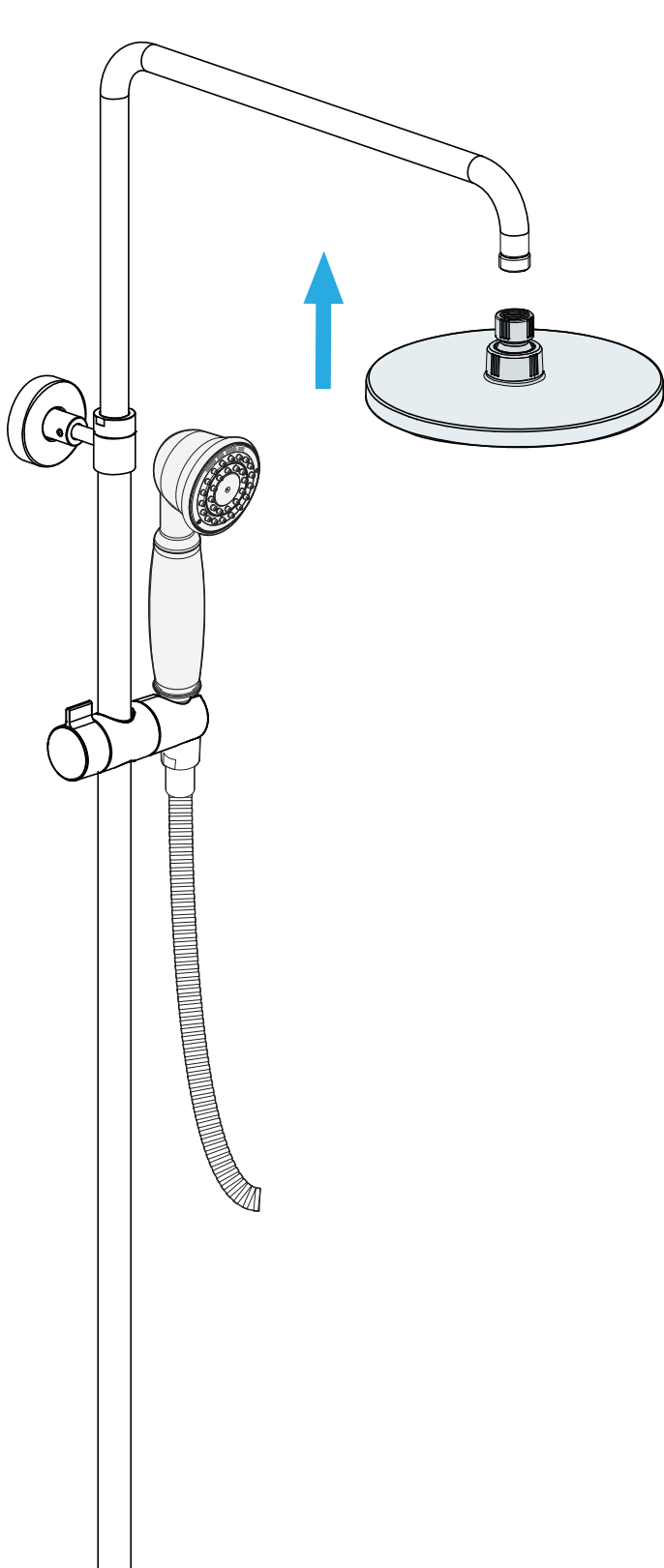
3. Connect the hand shower hose to the shower rail pipe and hand shower.



4. Install the top shower rail.



5. Connect the shower head.



6. Installation is complete. Do test run and check for any leaks.

