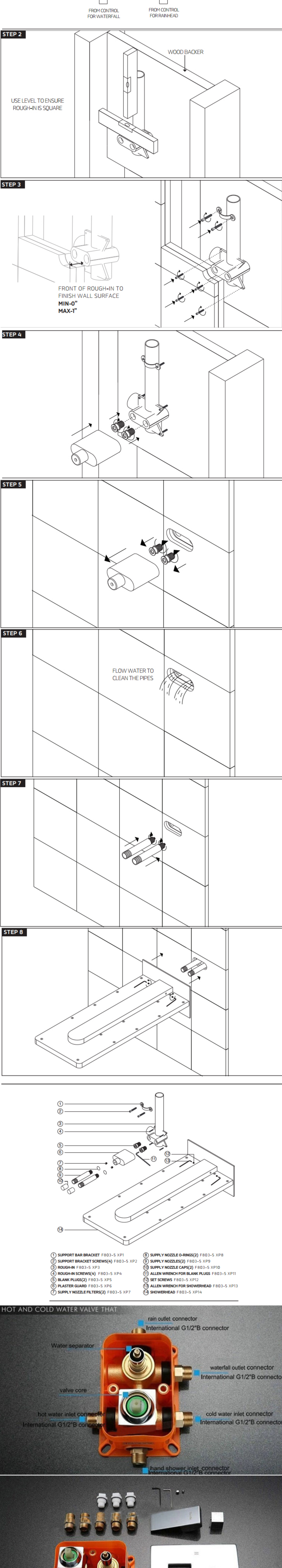
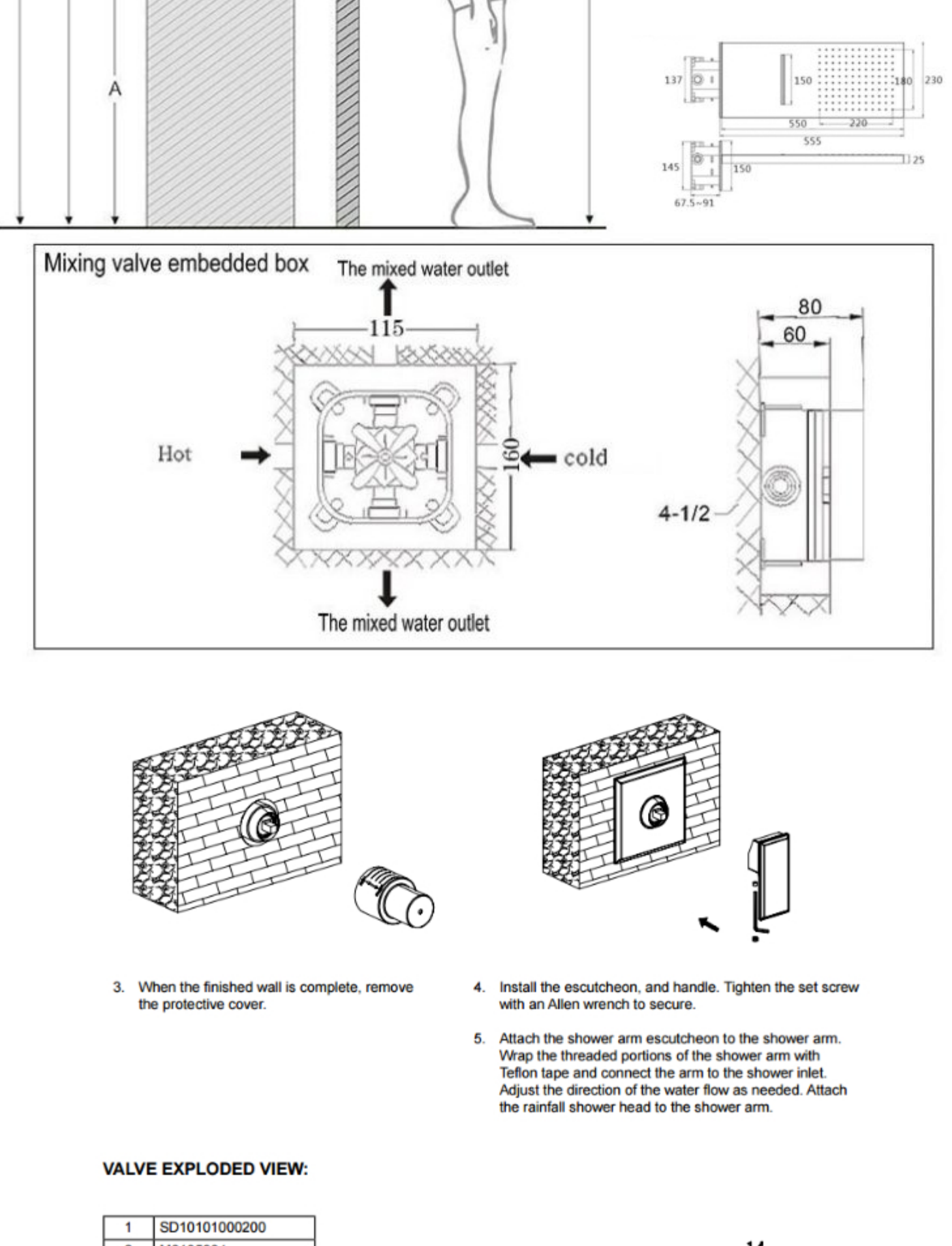


# Lava Wall Mount Color Changing LED Gold Finish Shower Set with Handheld Shower Head

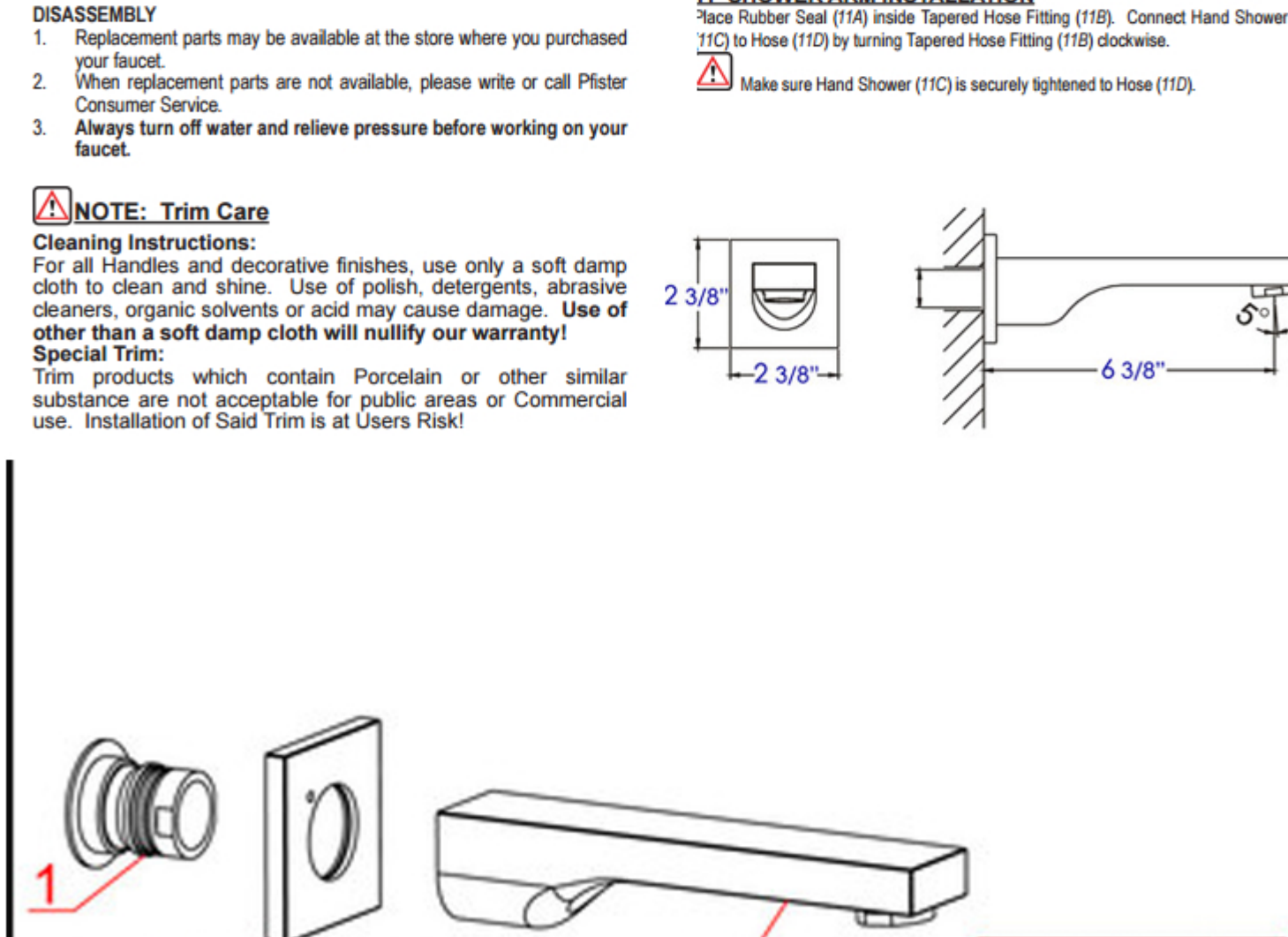
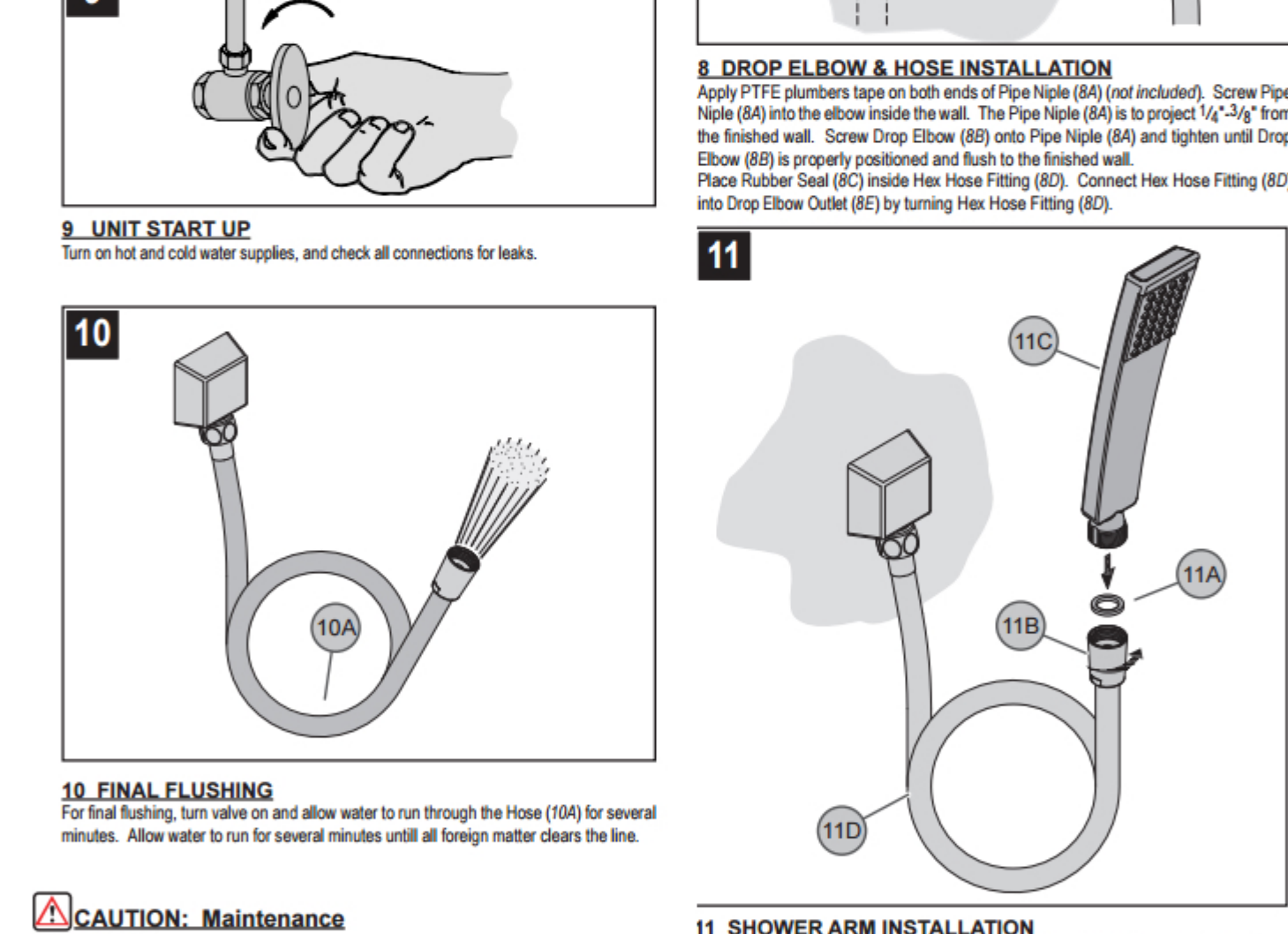
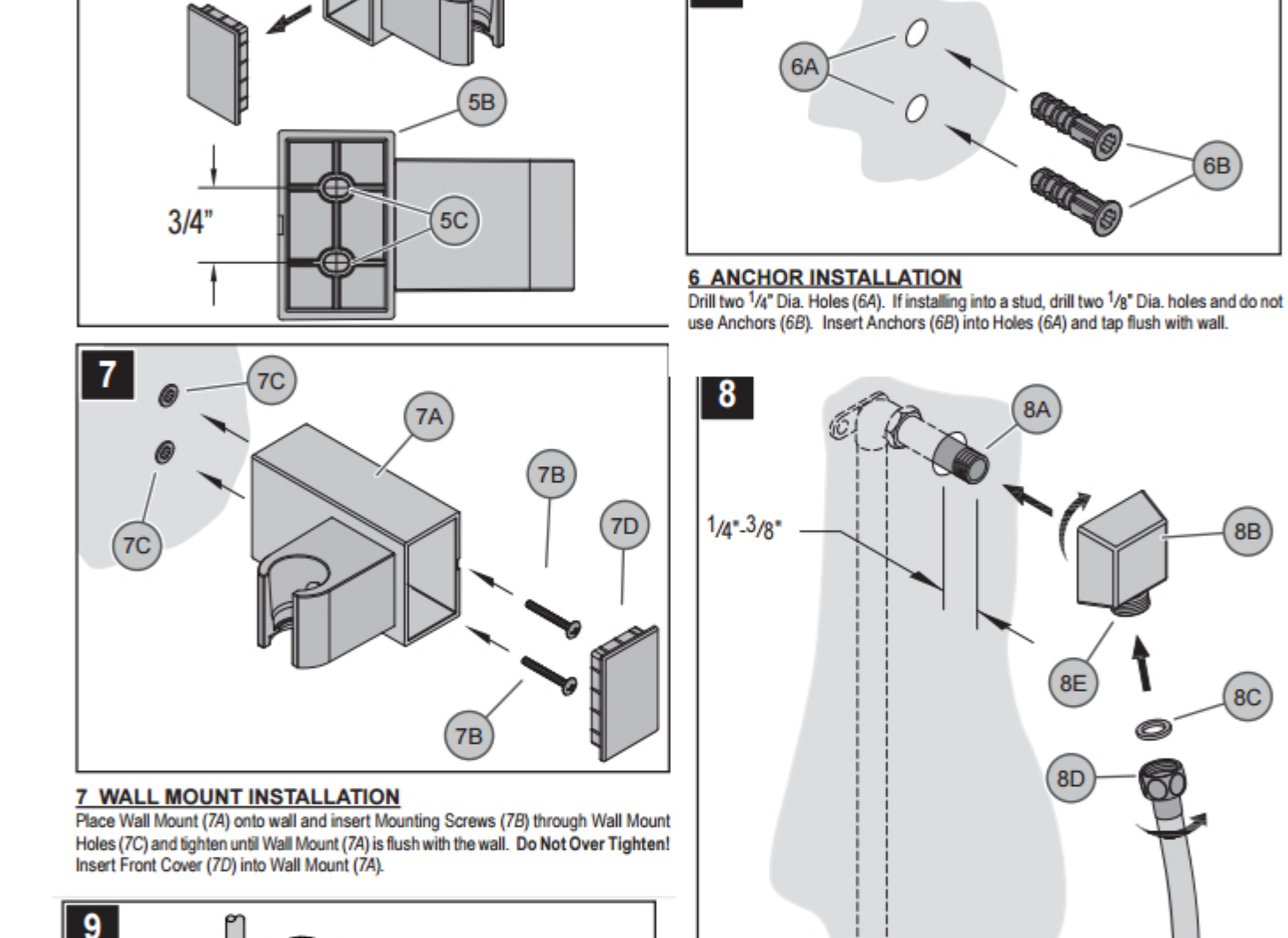
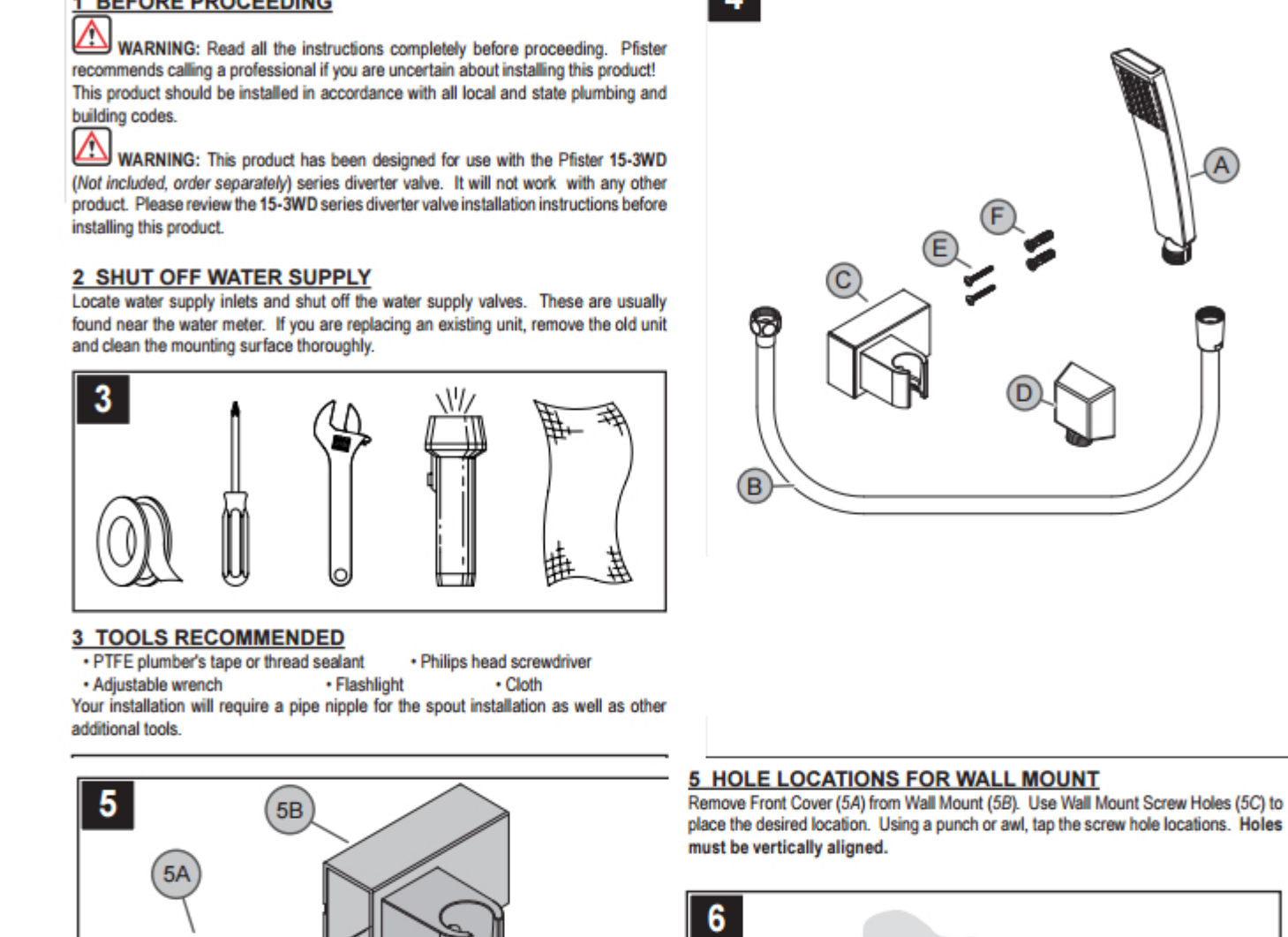
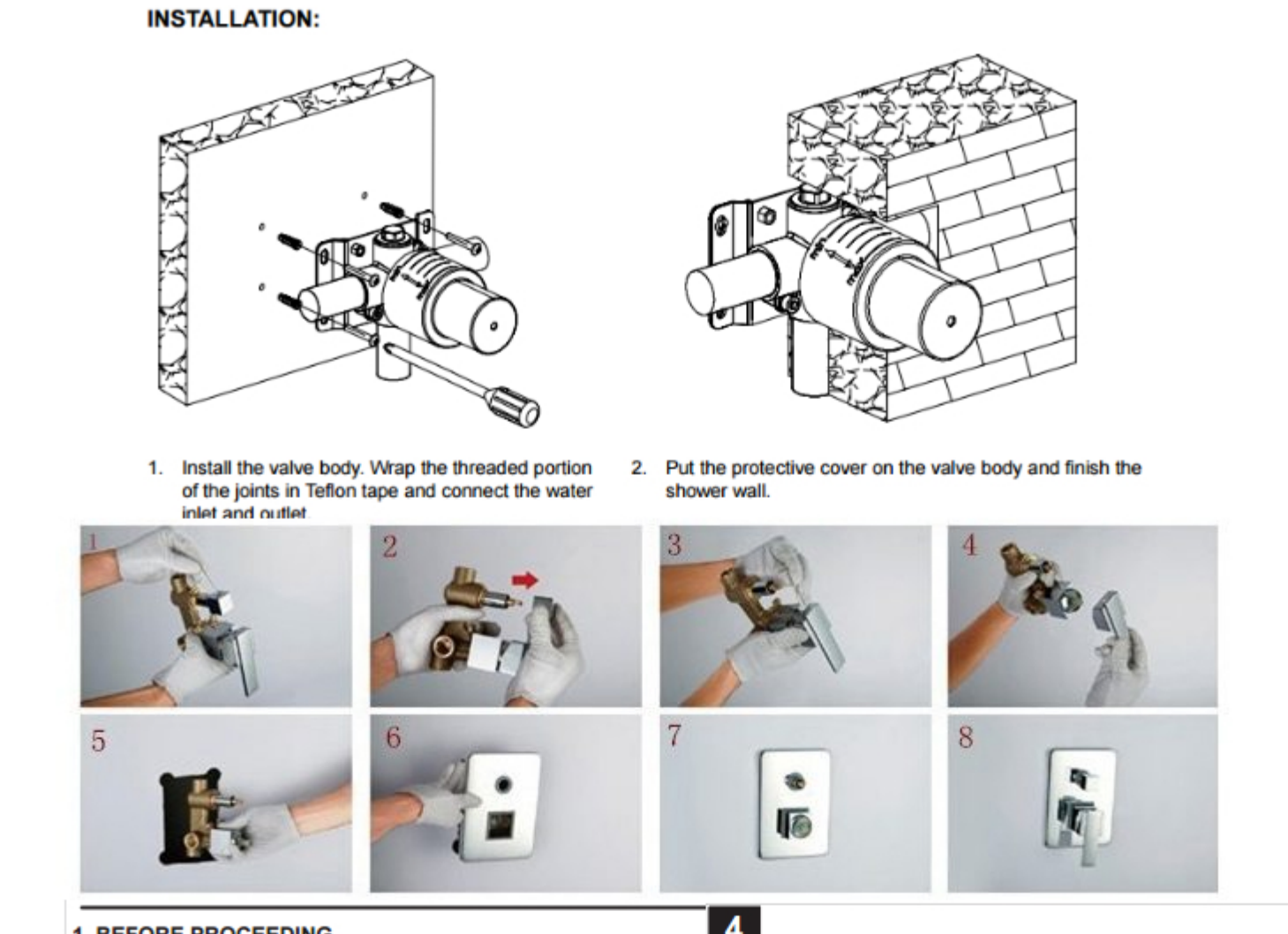
## INSTALLATION INSTRUCTIONS



1. SUPPORT BAR BRACKET F803-5 XP1
2. SUPPORT BRACKET SCREWS(4) F803-5 XP2
3. ROUGH-IN F803-5 XP3
4. BLANK PLUGS(2) F803-5 XP4
5. BLANK PLUGS(2) F803-5 XP5
6. PLASTER GUARD F803-5 XP6
7. SUPPLY NOZZLE FILTERS(2) F803-5 XP7
8. SUPPLY NOZZLE O-RINGS(2) F803-5 XP8
9. SUPPLY NOZZLE CAPS(2) F803-5 XP10
10. SET SCREWS F803-5 XP12
11. ALLEN WRENCH FOR SHOWERHEAD F803-5 XP13
12. SHOWERHEAD F803-5 XP14



| Model:                          | 8001A   |
|---------------------------------|---------|
| Valve net weight:               | 2590g   |
| Top spray shower net weight:    | 4650g   |
| Material:                       | brass   |
| Surface treatment:              | chrome  |
| Installation of water pressure: | 2-3KG   |
| The water flow:                 | 10L/Per |
| PPR tube:                       | G1/2"B  |
| size:                           | mm      |



This General diagram and installation instructions are not intended for any specific model, but is presented as a general guideline for installations!