

Fontana Platinum Massage Shower Panel System with Full Body Shower Jets



Fontana Full Body Bathroom Black Shower panel

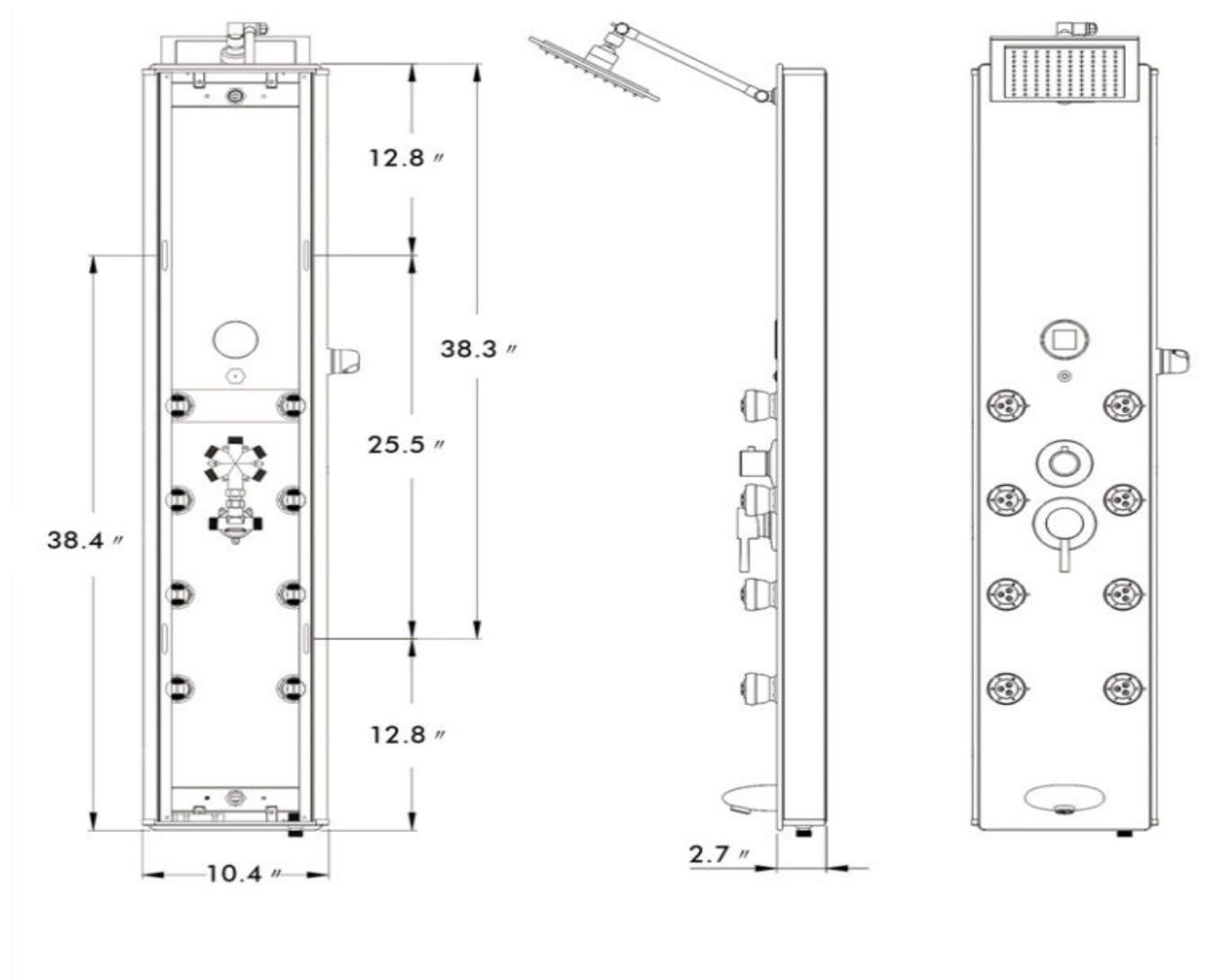
INSTALLATION GUIDE

Before installing, read entire installation guide. Observe all local building and safety codes.

We recommend consulting a professional if you are unfamiliar with installing bathroom fixtures and plumbing.

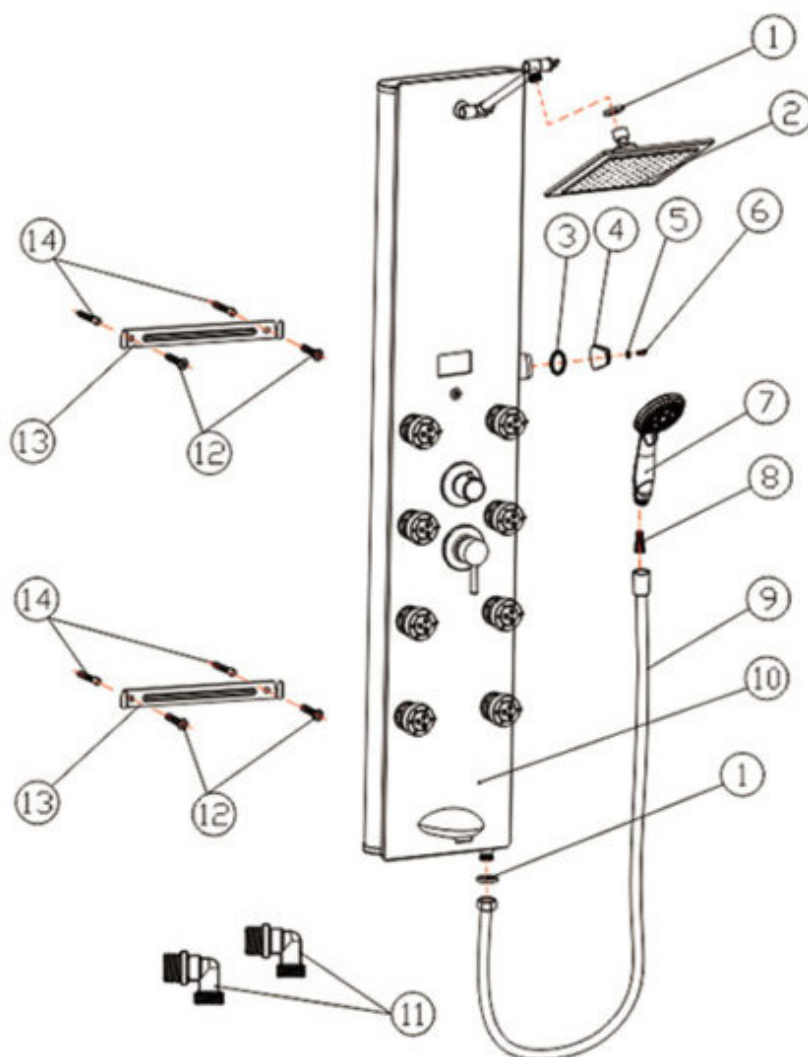
TOOLS AND MATERIALS:

Adjustable Wrench
Silicone Sealant
Damp Cloth

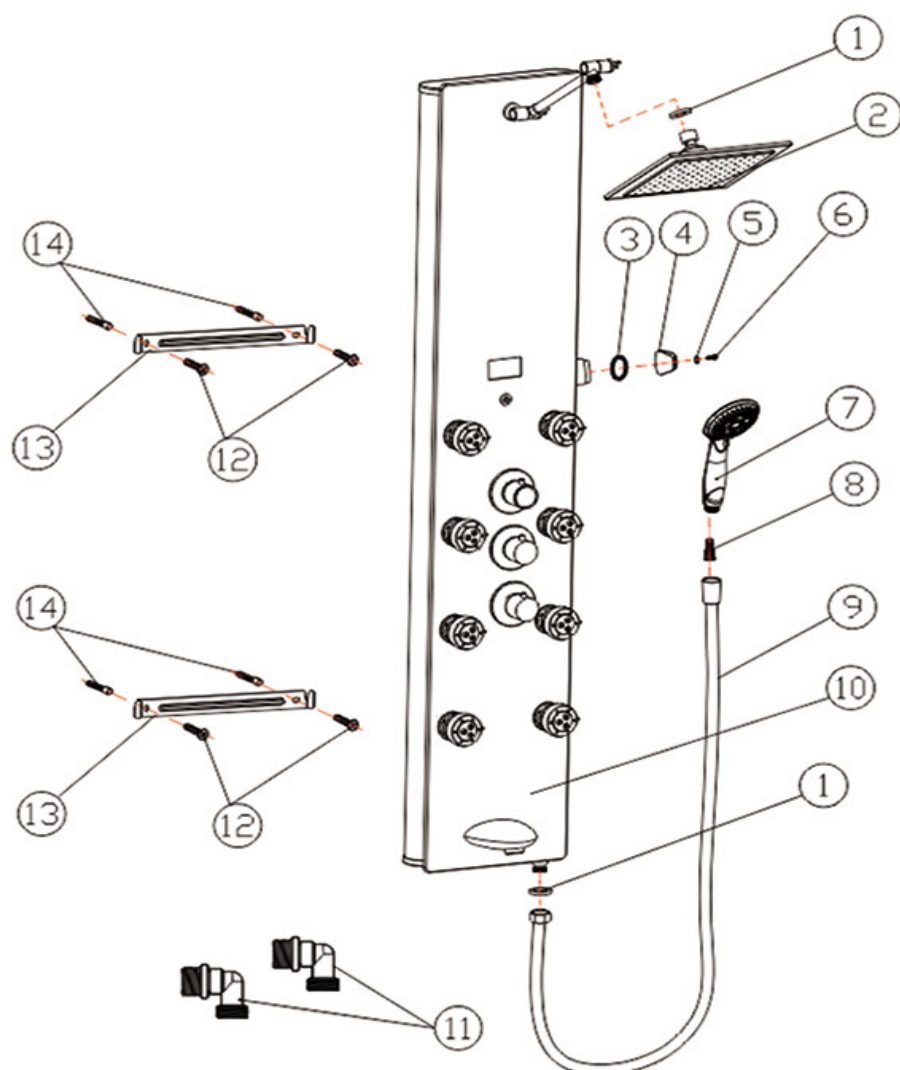


Shower Panel Installation and Operation Guide





①	Rubber Washer	⑧	Shower Head Filter
②	6021A Rainfall Shower Head	⑨	Shower Head Hose
③	Shower Head Holder Washer	⑩	Shower Panel Body
④	Shower Head Holder	⑪	Brass Elbow(Optional Part)
⑤	M4 Ring	⑫	M4 X 20 Screws
⑥	M4X16 Screw	⑬	Mounting Bracket
⑦	392 Handheld Shower Head	⑭	Plastic Expand Plug



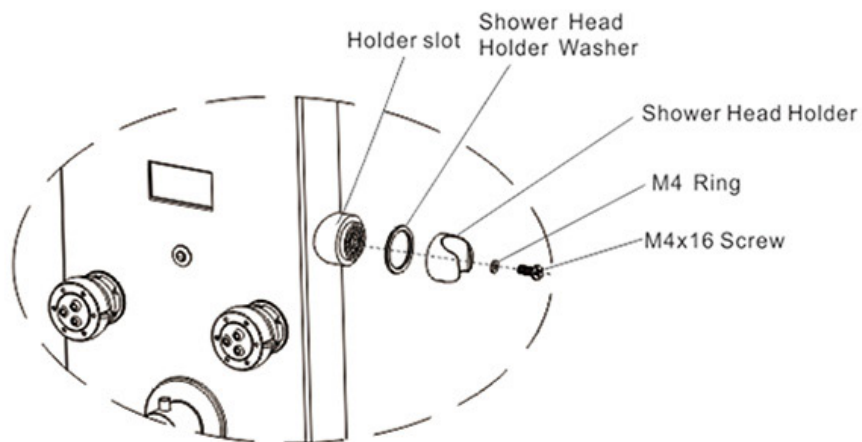
①	Rubber Washer	⑧	Shower Head Filter
②	6021A Rainfall Shower Head	⑨	Shower Head Hose
③	Shower Head Holder Washer	⑩	Shower Panel Body
④	Shower Head Holder	⑪	Brass Elbow(Optional Part)
⑤	M4 Ring	⑫	M4 X 20 Screws
⑥	M4X16 Screw	⑬	Mounting Bracket
⑦	331 Handheld Shower Head	⑭	Plastic Expand Plug

Installation

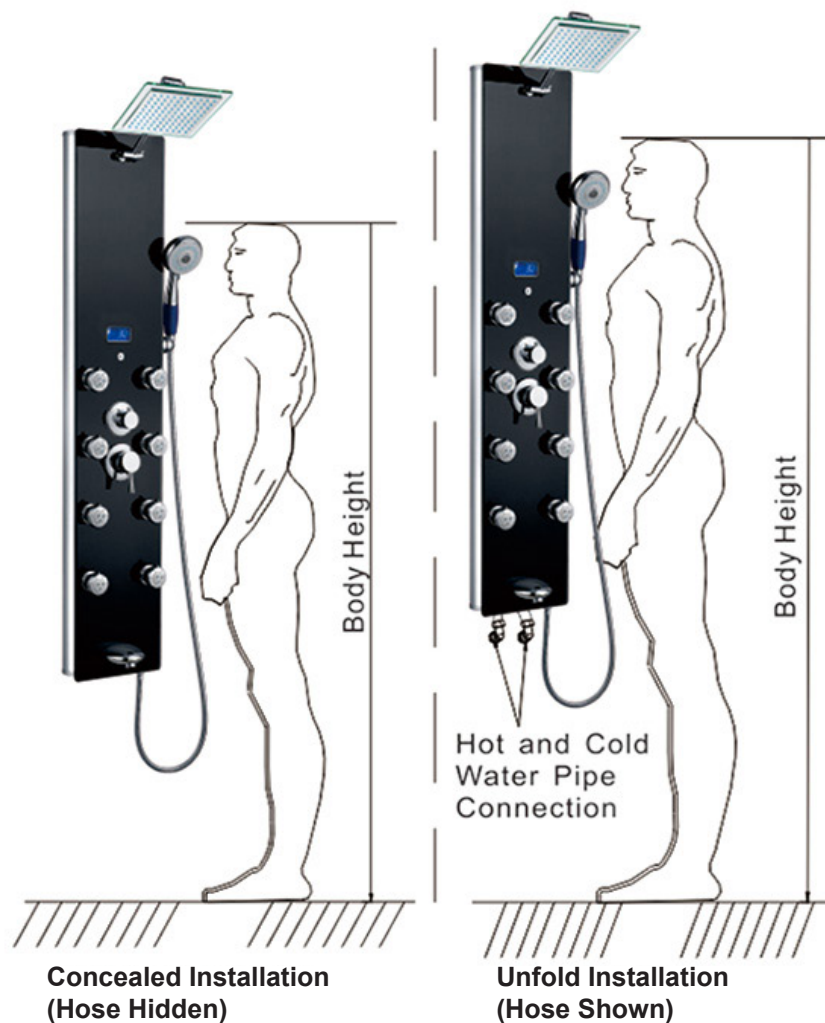
Installing the handheld shower head holder.

Place the shower head holder washer onto the slot, and put on the shower head holder.

Use M4 ring and M4X16 screw to secure the shower head holder onto the slot

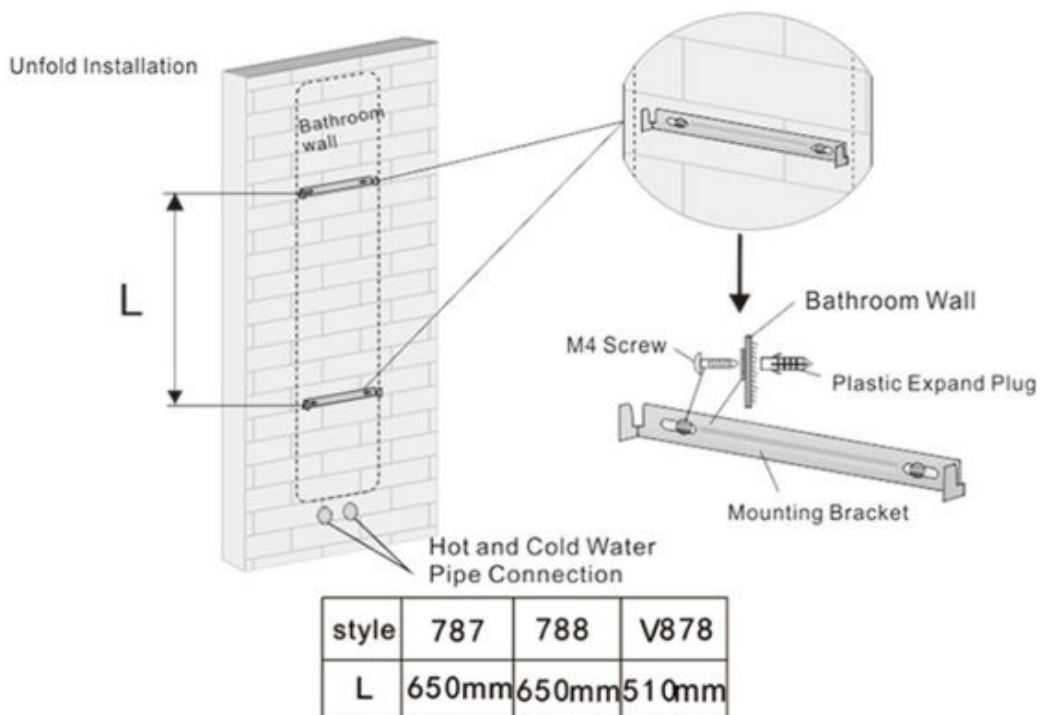
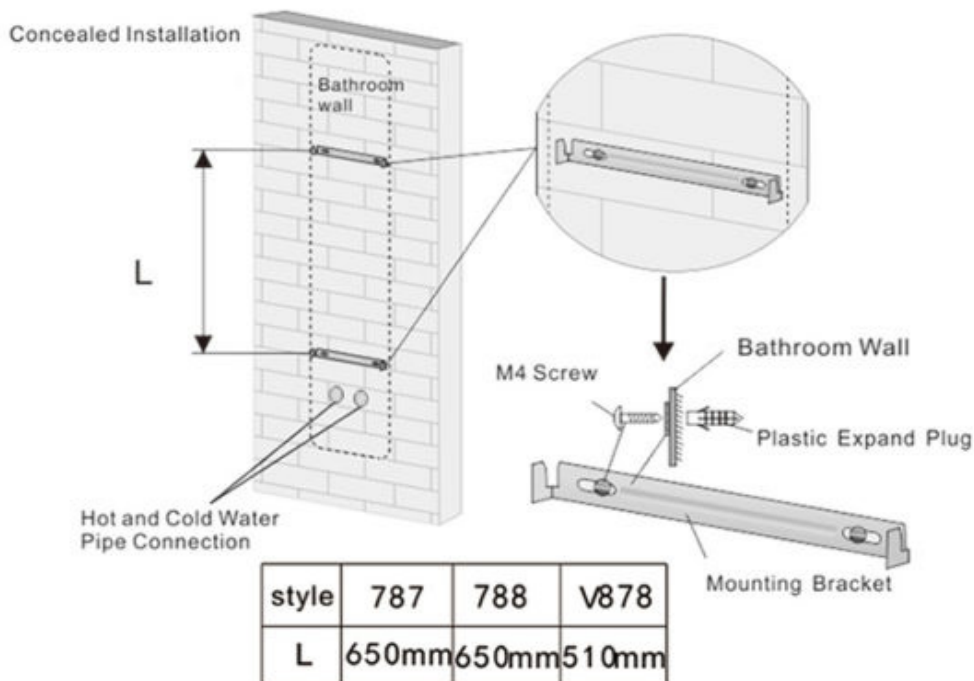


Based on the height of the user(s) and location of the hot/cold pipe inlet, select concealed or unfold installation. (see picture below)



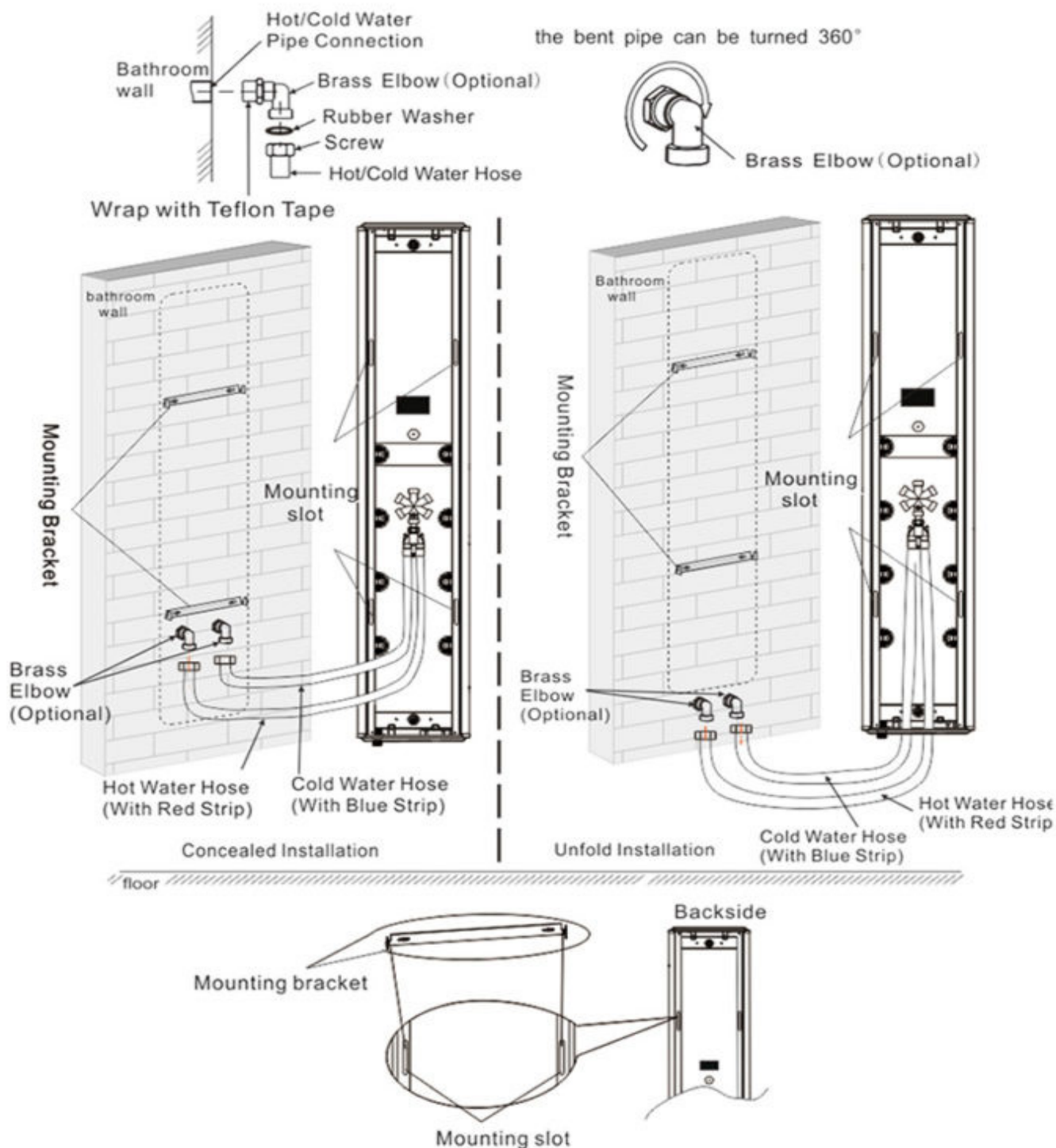
Installing the Mounting bracket:

Base on the height you want to install the shower panel, mark and drill 4 screw holes on the wall. Once the hole is drilled, put in the plastic expand plug and screw the mounting bracket onto the wall. When screwing the mounting bracket, please make sure that it is being screwed on a wood stud behind the wall in order to provide sufficient strength to hold the shower panel.

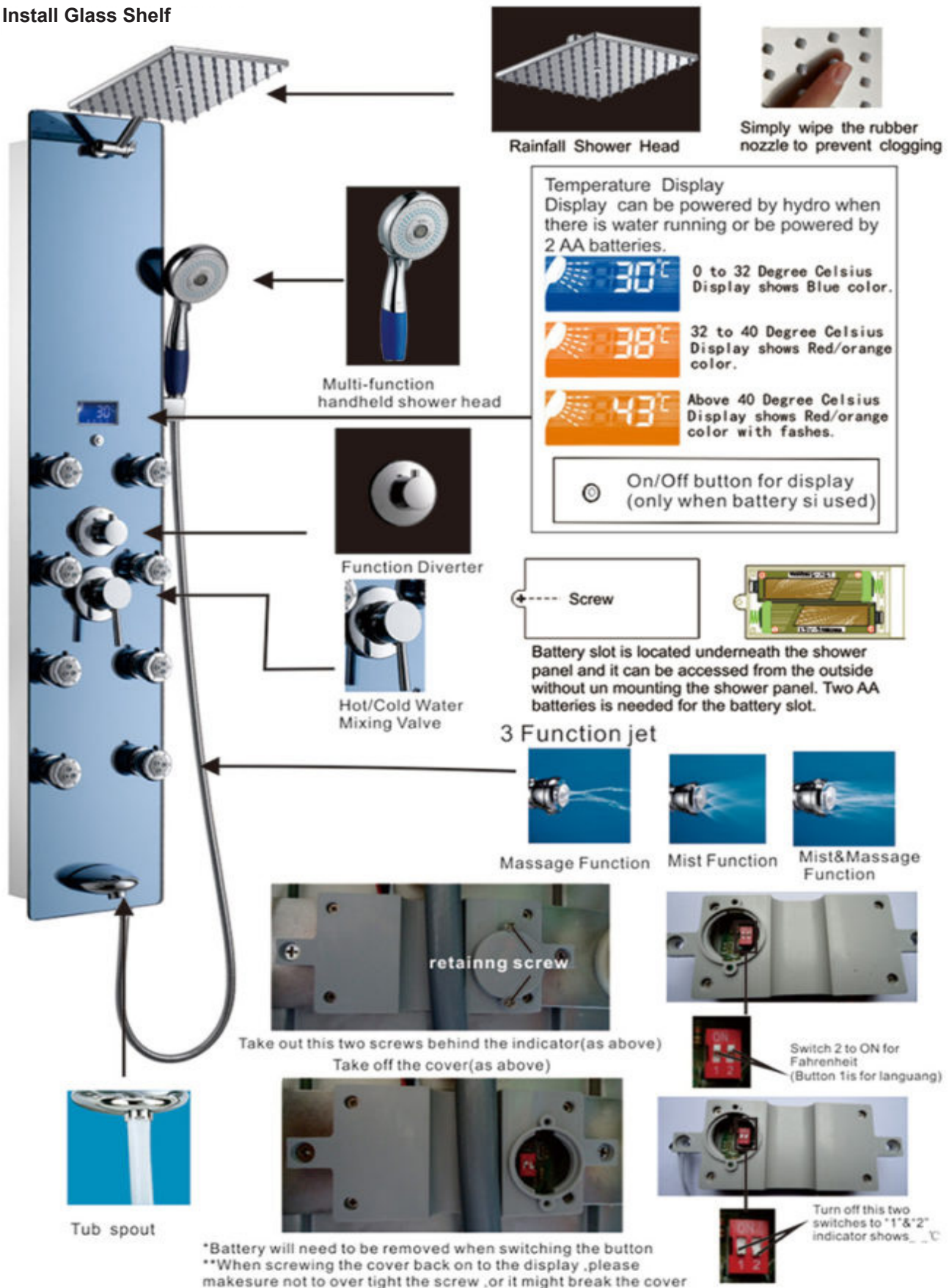


Connecting and hanging of Shower Panel Body

Before connecting, please switch on water supply to flush out the debris (i.e. rust small particle) inside the water pipe. Failure to do so might cause hoses to be clogged. To install, use Teflon Tape to wrap around the fitting of the water pipe. Insert a rubber washer with mesh onto the hoses, and simply connect the 1/2 "hoses with a 1/2" pipe fitting. After connection is done, switch on the water to make sure no leaking occurs. To mount the shower panel, screw the mounting bracket onto the wall, and simply mount the shower panel onto the mounting bracket. When screwing the mounting sufficient strength to hold the shower panel. (see picture below).



Install Glass Shelf



This general Diagram and installation are not intended for any specific model, but is presented as a general guideline for installations!.