

## Shower



## THERMOSTATIC VALVE INFORMATION

the shower is used and create a customised shower system.

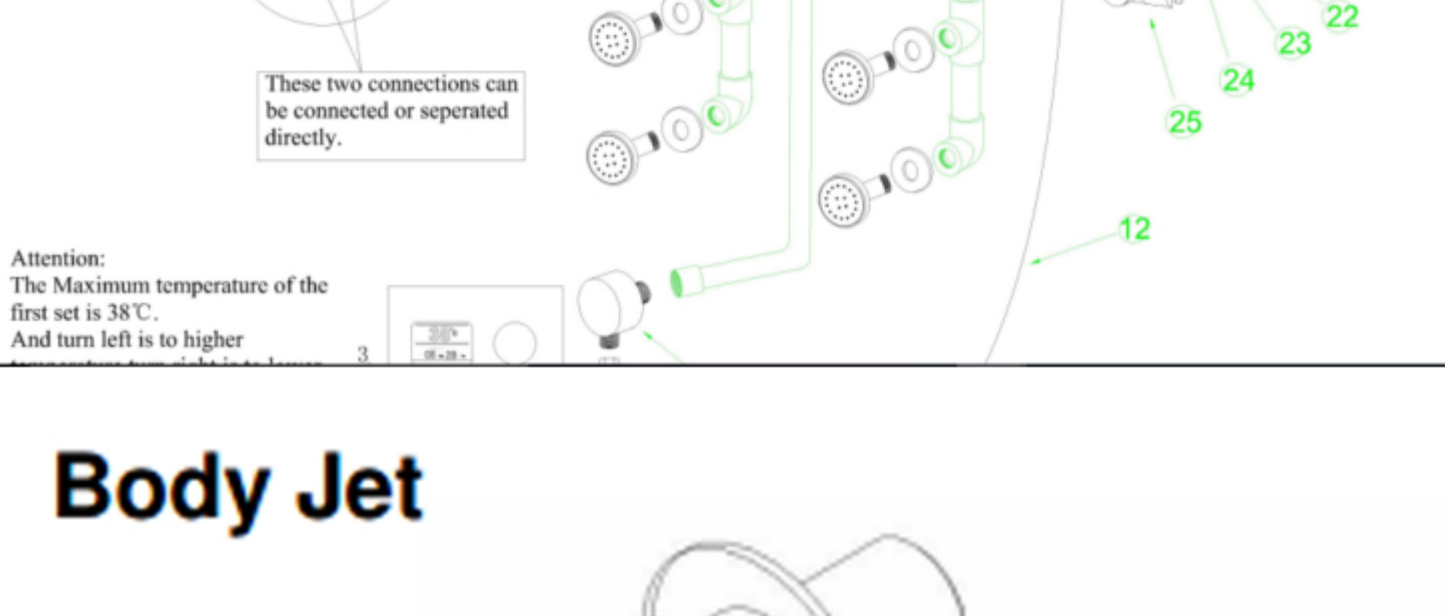
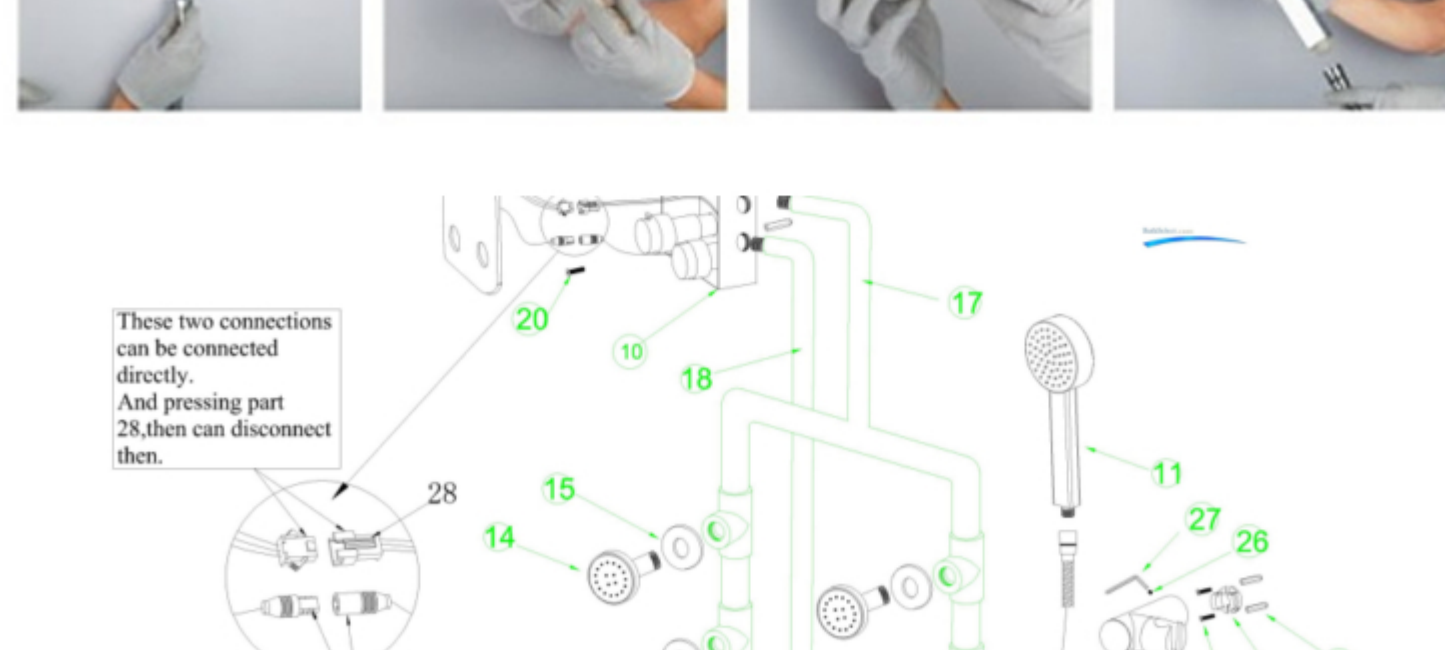
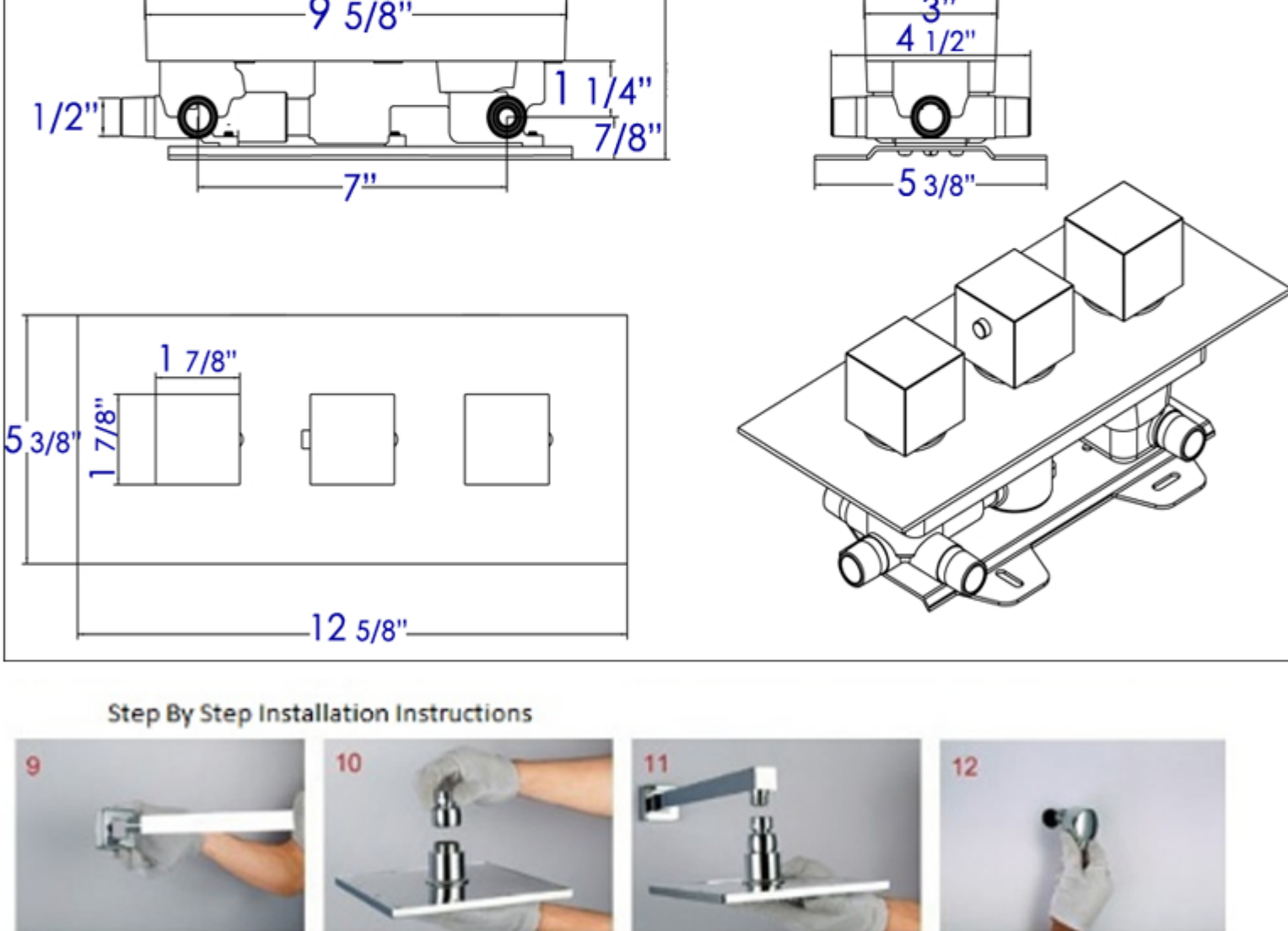
Valve A operates as a standard three-way shower diverter. You can select a combination of shower heads, body

of your selected shower outputs by di

Valve B connects conventionally to your hot and cold water supply with the hot water on the left and the cold water on

Valve C enables you to have an additional output. This valve operates independently from Valve A allowing two outputs to be used at one time. This valve is typically connected to the body jet feature, allowing the body jets and shower head to be used simultaneously but can be configured to accommodate any speciality shower design. If no additional output is desired this valve can be closed with a threaded brass plug.

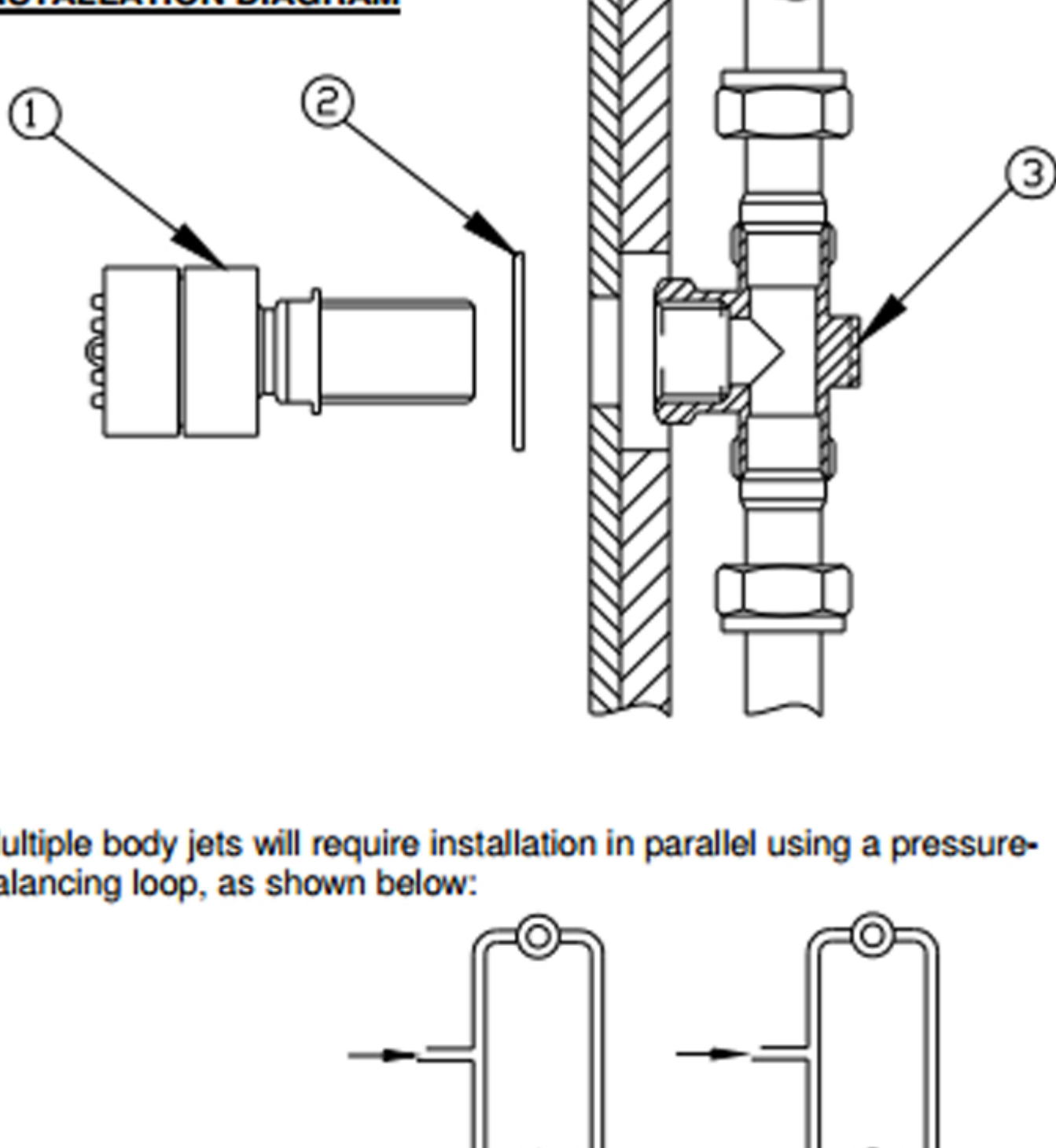
Your plumber can determine the proper plumbing layout for your customised shower configuration. All rough-in work



## Fitting


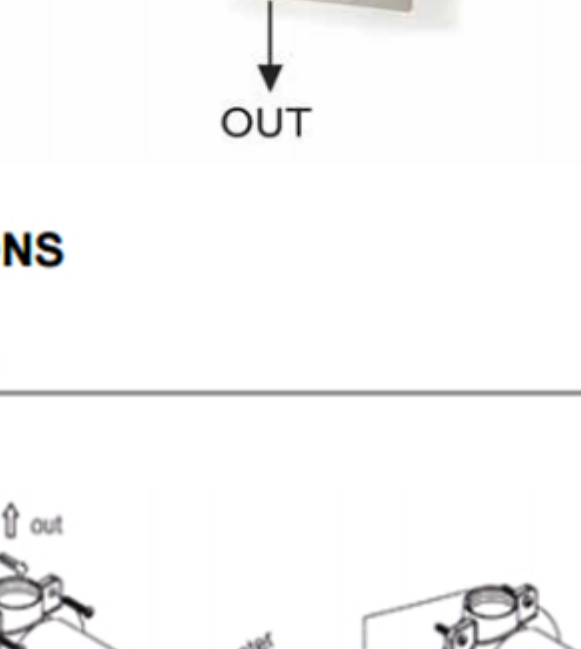
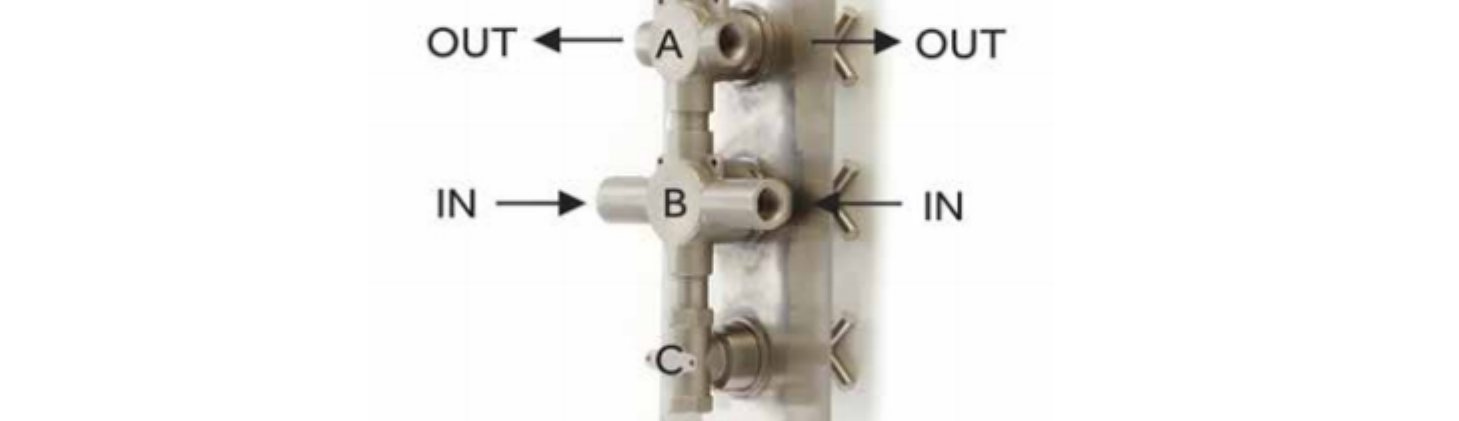
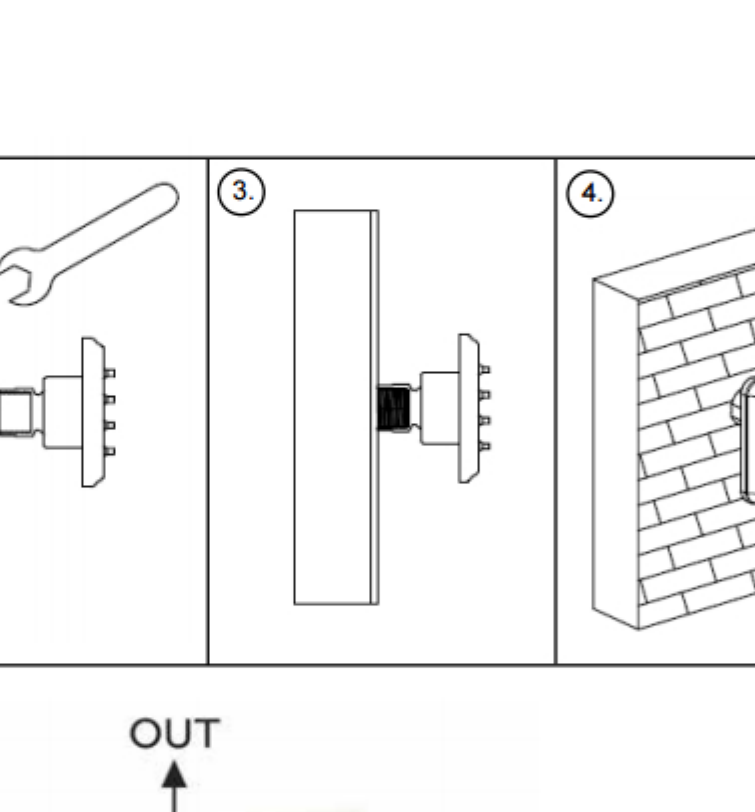


### INSTALLATION DIAGRAM

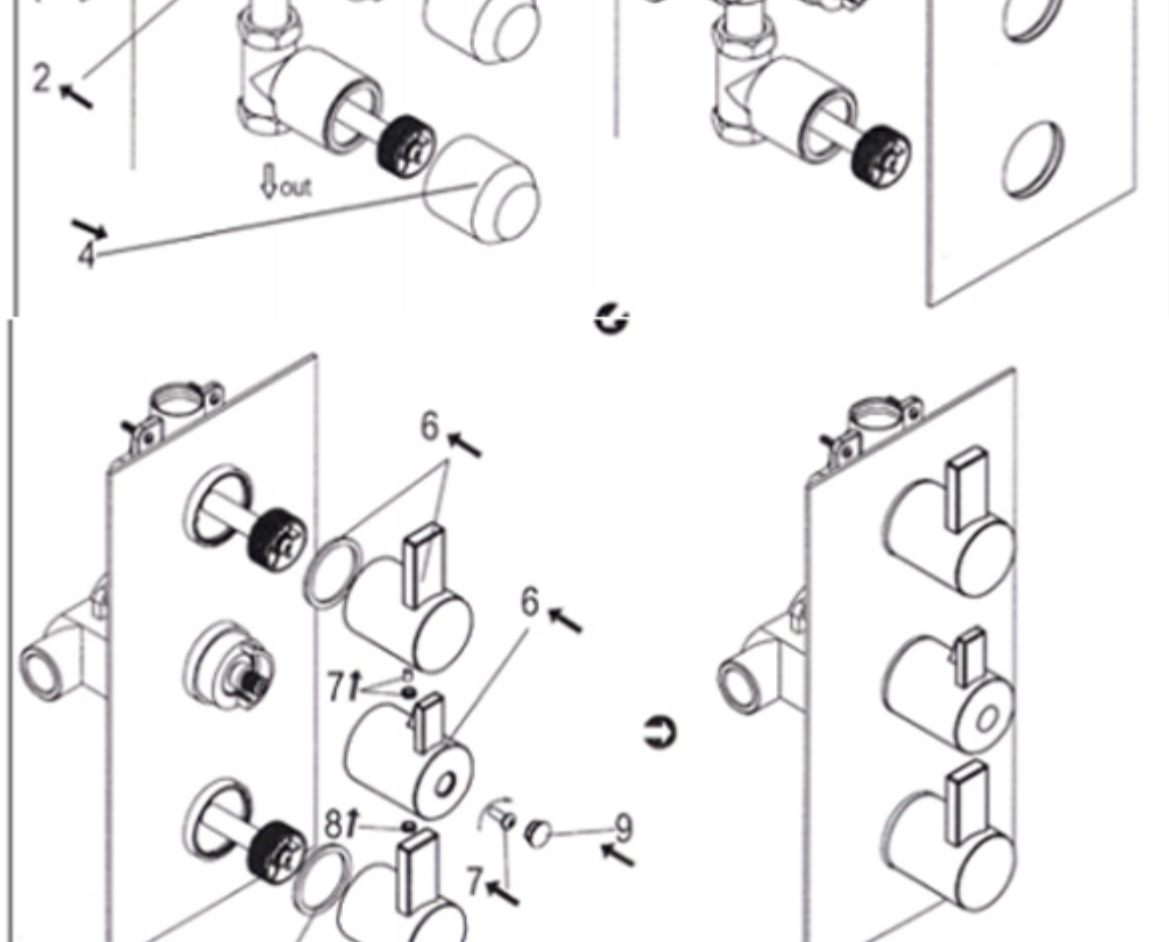


**If the fitting begins to drip**

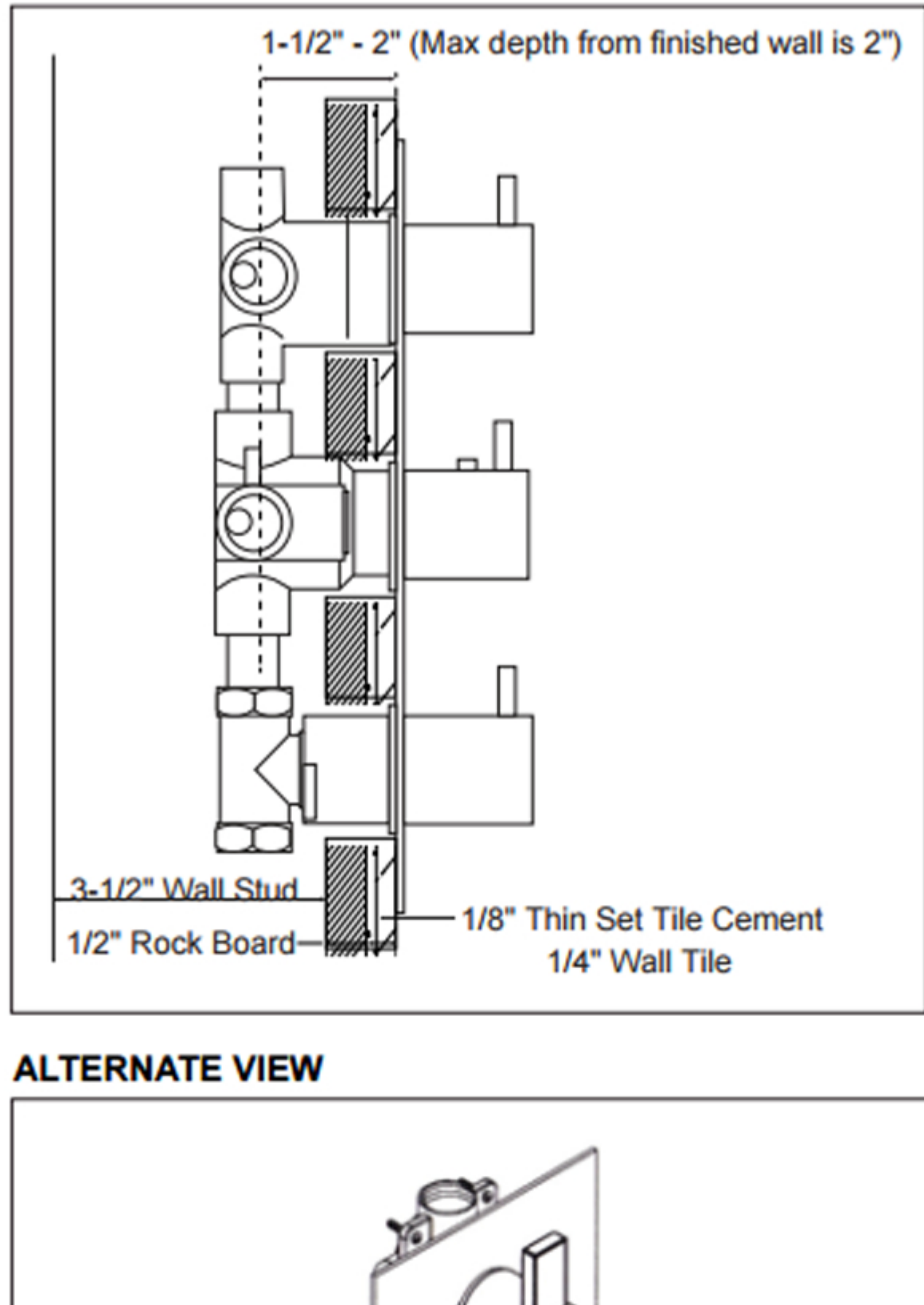
1. Turn off the water supply.
2. Unscrew face plate and remove nozzle.

A diagram of a vertical pipe. At the bottom of the pipe, there is a circular face plate with a central screw or nozzle. The pipe itself is a simple vertical line.

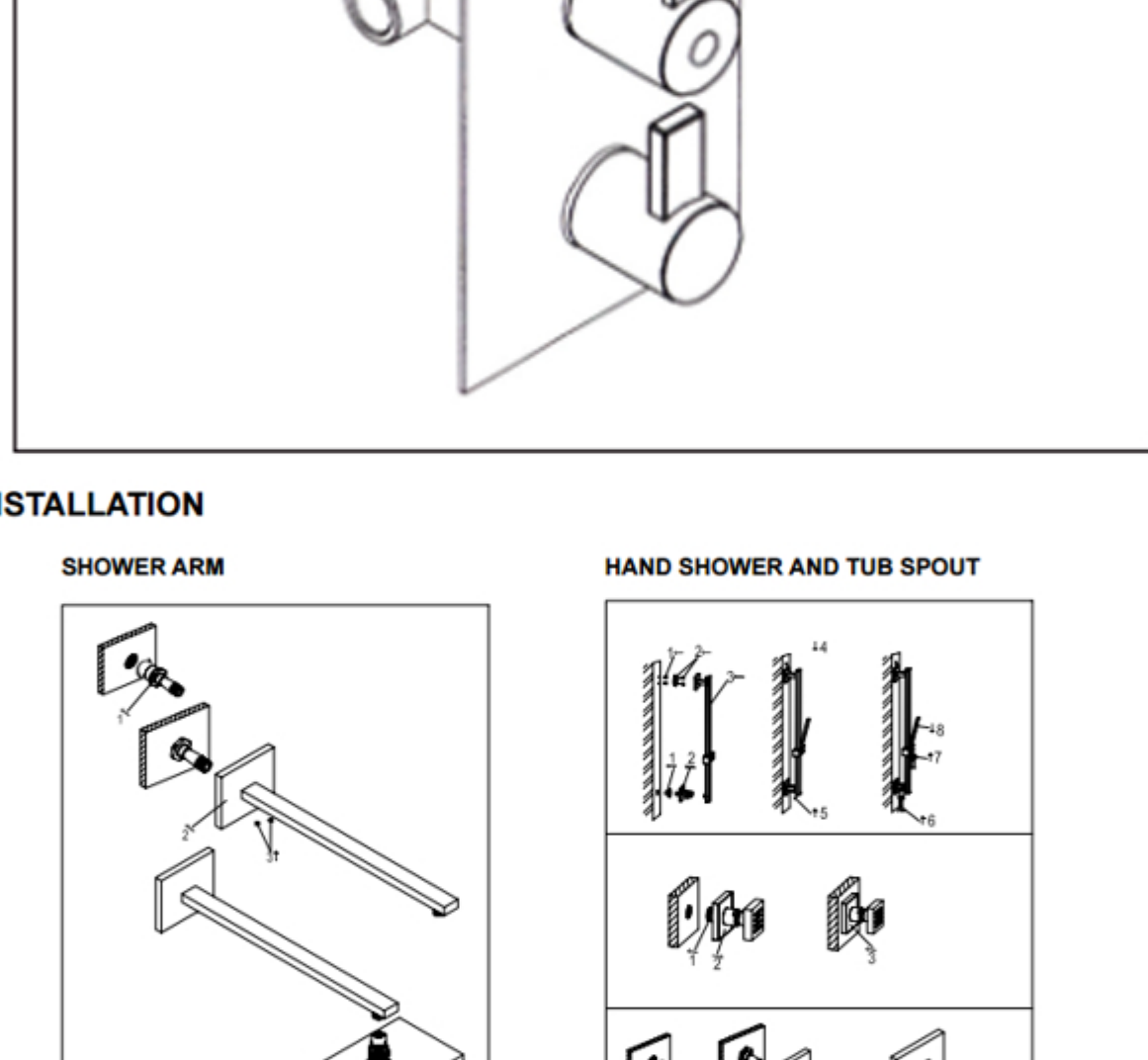
Hot water →



## TECHNICAL DRAWING



## 6



|   | 1980  | 1985  | 1990  | 1995  | 2000  | 2005  | 2010  | 2015  | 2020  |
|---|-------|-------|-------|-------|-------|-------|-------|-------|-------|
| Population                                  | 76.5  | 80.5  | 84.5  | 88.5  | 92.5  | 96.5  | 100.0 | 103.5 | 107.0 |
| GDP per capita                              | 1,000 | 1,200 | 1,400 | 1,600 | 1,800 | 2,000 | 2,200 | 2,400 | 2,600 |
| Life expectancy at birth                    | 65    | 68    | 71    | 74    | 77    | 80    | 83    | 86    | 89    |
| Urban population (%)                        | 35    | 40    | 45    | 50    | 55    | 60    | 65    | 70    | 75    |
| Employment rate (%)                         | 55    | 58    | 61    | 64    | 67    | 70    | 73    | 76    | 79    |
| Unemployment rate (%)                       | 15    | 12    | 10    | 8     | 7     | 6     | 5     | 4     | 3     |
| Government expenditure as % of GDP          | 15    | 18    | 21    | 24    | 27    | 30    | 33    | 36    | 39    |
| Private consumption as % of GDP             | 55    | 58    | 61    | 64    | 67    | 70    | 73    | 76    | 79    |
| Investment as % of GDP                      | 10    | 12    | 14    | 16    | 18    | 20    | 22    | 24    | 26    |
| Exports as % of GDP                         | 10    | 12    | 14    | 16    | 18    | 20    | 22    | 24    | 26    |
| Imports as % of GDP                         | 10    | 12    | 14    | 16    | 18    | 20    | 22    | 24    | 26    |
| Current account balance as % of GDP         | -5    | -4    | -3    | -2    | -1    | 0     | 1     | 2     | 3     |
| Foreign direct investment as % of GDP       | 2     | 3     | 4     | 5     | 6     | 7     | 8     | 9     | 10    |
| Official development assistance as % of GDP | 1     | 1     | 1     | 1     | 1     | 1     | 1     | 1     | 1     |
| Net international reserves as % of GDP      | 5     | 6     | 7     | 8     | 9     | 10    | 11    | 12    | 13    |
| Public debt as % of GDP                     | 20    | 25    | 30    | 35    | 40    | 45    | 50    | 55    | 60    |
| Household savings as % of GDP               | 10    | 12    | 14    | 16    | 18    | 20    | 22    | 24    | 26    |
| Corporate savings as % of GDP               | 5     | 6     | 7     | 8     | 9     | 10    | 11    | 12    | 13    |
| Government savings as % of GDP              | 5     | 6     | 7     | 8     | 9     | 10    | 11    | 12    | 13    |
| Total savings as % of GDP                   | 20    | 24    | 28    | 32    | 37    | 42    | 47    | 52    | 57    |
| Capital formation as % of GDP               | 15    | 18    | 21    | 24    | 27    | 30    | 33    | 36    | 39    |
| Fixed capital formation as % of GDP         | 10    | 12    | 14    | 16    | 18    | 20    | 22    | 24    | 26    |
| Consumption of fixed capital as % of GDP    | 5     | 6     | 7     | 8     | 9     | 10    | 11    | 12    | 13    |
| Government consumption as % of GDP          | 10    | 12    | 14    | 16    | 18    | 20    | 22    | 24    | 26    |
| Private consumption as % of GDP             | 45    | 46    | 47    | 48    | 49    | 50    | 51    | 52    | 53    |
| Government consumption as % of GDP          | 10    | 12    | 14    | 16    | 18    | 20    | 22    | 24    | 26    |
| Private consumption as % of GDP             | 45    | 46    | 47    | 48    | 49    | 50    | 51    | 52    | 53    |
| Government consumption as % of GDP          | 10    | 12    | 14    | 16    | 18    | 20    | 22    | 24    | 26    |
| Private consumption as % of GDP             | 45    | 46    | 47    | 48    | 49    | 50    | 51    | 52    | 53    |
| Government consumption as % of GDP          | 10    | 12    | 14    | 16    | 18    | 20    | 22    | 24    | 26    |
| Private consumption as % of GDP             | 45    | 46    | 47    | 48    | 49    | 50    | 51    | 52    | 53    |
| Government consumption as % of GDP          | 10    | 12    | 14    | 16    | 18    | 20    | 22    | 24    | 26    |
| Private consumption as % of GDP             | 45    | 46    | 47    | 48    | 49    | 50    | 51    | 52    | 53    |
| Government consumption as % of GDP          | 10    | 12    | 14    | 16    | 18    | 20    | 22    | 24    | 26    |
| Private consumption as % of GDP             | 45    | 46    | 47    | 48    | 49    | 50    | 51    | 52    | 53    |
| Government consumption as % of GDP          | 10    | 12    | 14    | 16    | 18    | 20    | 22    | 24    | 26    |
| Private consumption as % of GDP             | 45    | 46    | 47    | 48    | 49    | 50    | 51    | 52    | 53    |
| Government consumption as % of GDP          | 10    | 12    | 14    | 16    | 18    | 20    | 22    | 24    | 26    |
| Private consumption as % of GDP             | 45    | 46    | 47    | 48    | 49    | 50    | 51    | 52    | 53    |
| Government consumption as % of GDP          | 10    | 12    | 14    | 16    | 18    | 20    | 22    | 24    | 26    |
| Private consumption as % of GDP             | 45    | 46    | 47    | 48    | 49    | 50    | 51    | 52    | 53    |
| Government consumption as % of GDP          | 10    | 12    | 14    | 16    | 18    | 20    | 22    | 24    | 26    |
| Private consumption as % of GDP             | 45    | 46    | 47    | 48    | 49    | 50    | 51    | 52    | 53    |
| Government consumption as % of GDP          | 10    | 12    | 14    | 16    | 18    | 20    | 22    | 24    | 26    |
| Private consumption as % of GDP             | 45    | 46    | 47    | 48    | 49    | 50    | 51    | 52    | 53    |
| Government consumption as % of GDP          | 10    | 12    | 14    | 16    | 18    | 20    | 22    | 24    | 26    |
| Private consumption as % of GDP             | 45    | 46    | 47    | 48    | 49    | 50    | 51    | 52    | 53    |
| Government consumption as % of GDP          | 10    | 12    | 14    | 16    | 18    | 20    | 22    | 24    | 26    |
| Private consumption as % of GDP             | 45    | 46    | 47    | 48    | 49    | 50    | 51    | 52    | 53    |
| Government consumption as % of GDP          | 10    | 12    | 14    | 16    | 18    | 20    | 22    | 24    | 26    |
|   |       |       |       |       |       |       |       |       |       |

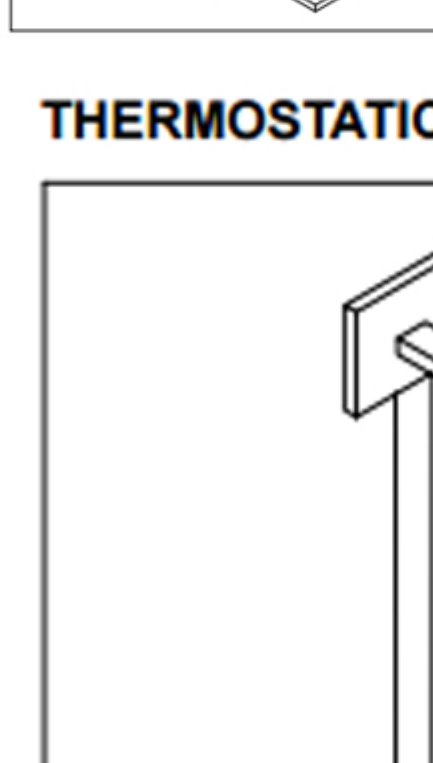
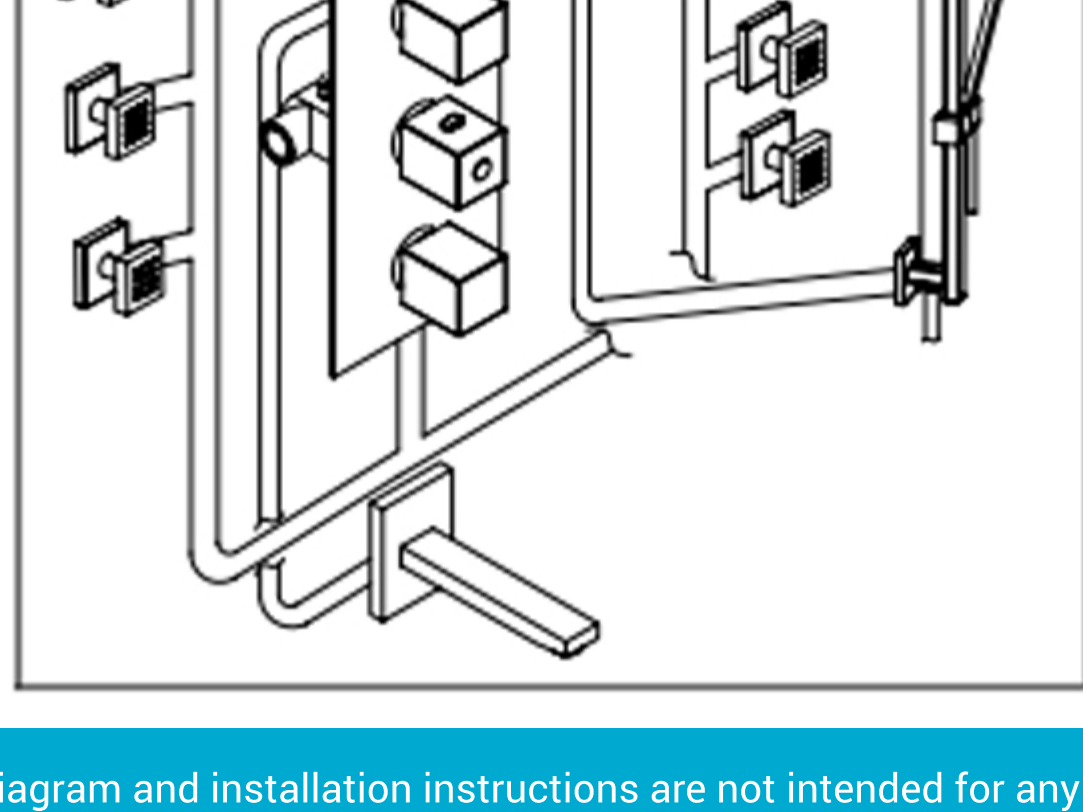
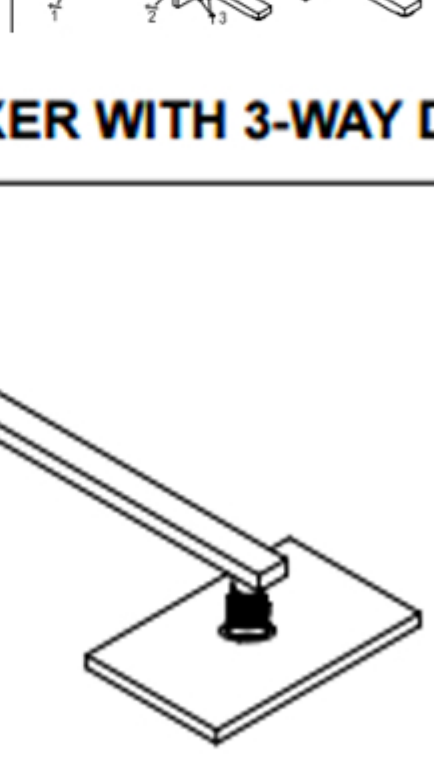


Diagram showing the connection of a cable to a cable tie. A cable is shown entering a cable tie, which is then secured with a screwdriver.



model, but is presented as a general guideline for Installations!