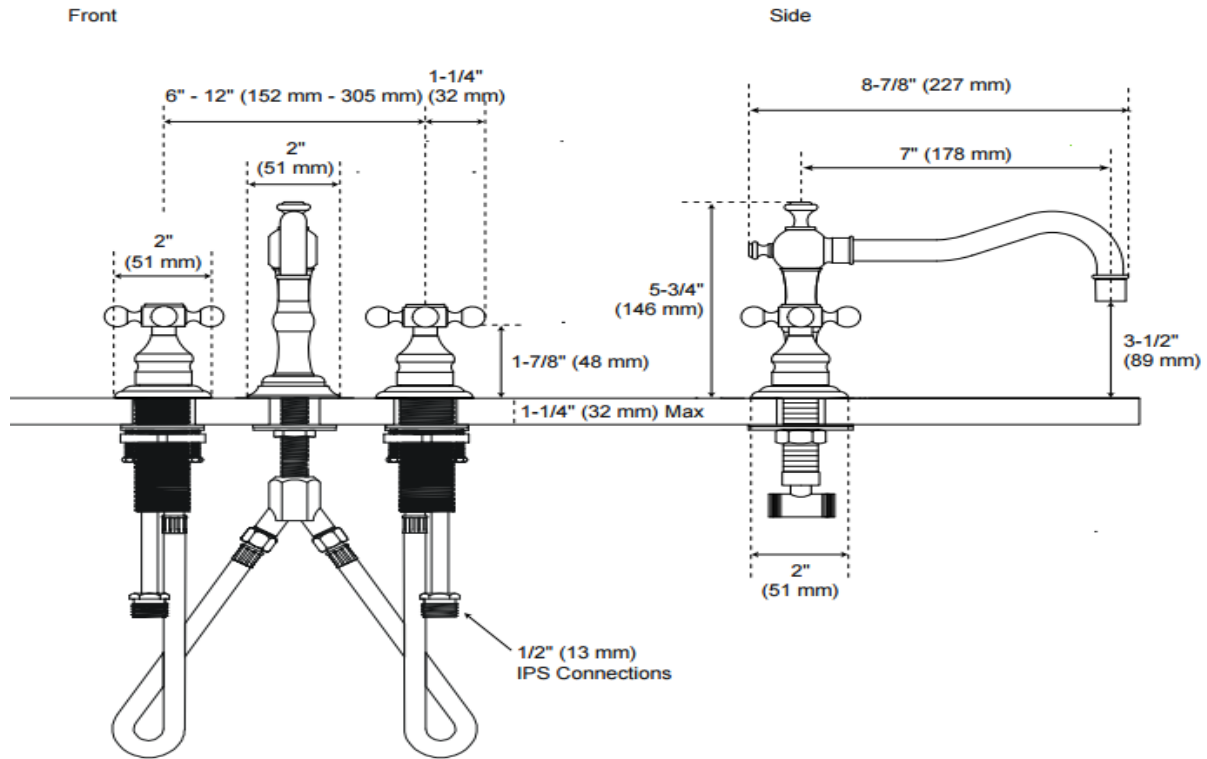
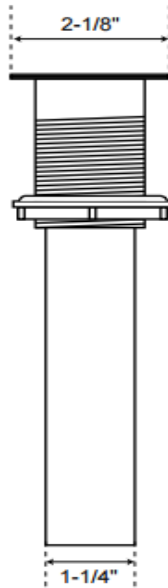


Widespread Bathroom Faucet Installation Instructions

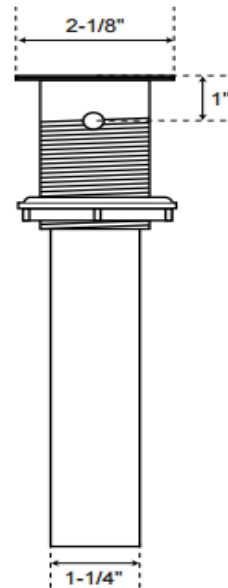


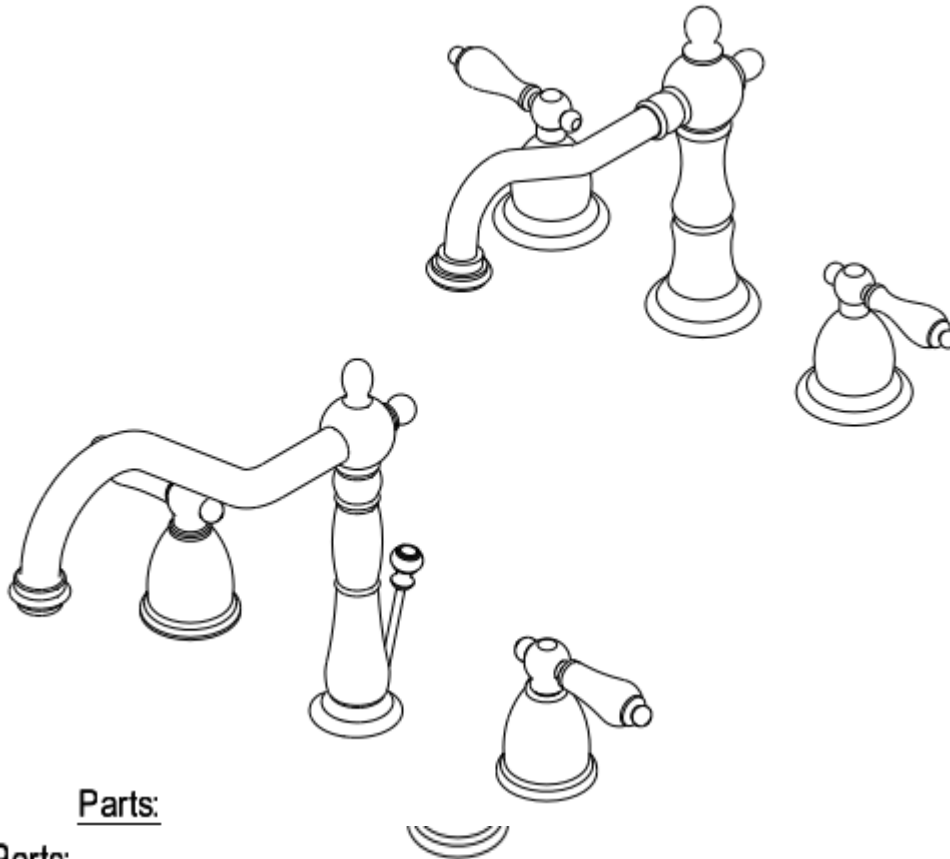
Bathroom Sink Drain

Without Overflow





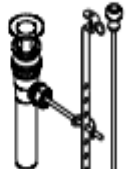
With Overflow



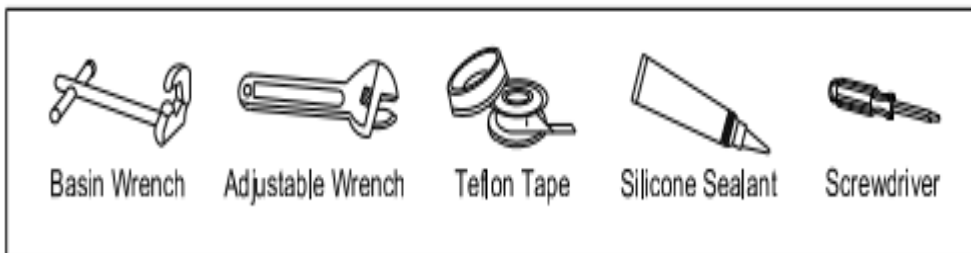


Parts:

Parts:

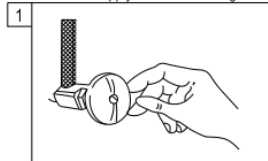
Washer & Lock Nut	Cone Washer & Coupling Nut	Pop-Up
		
2 Pcs	2 Pcs	1 Pc

Need Tools:

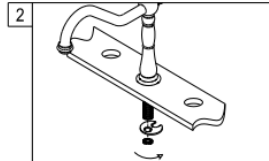


BEFORE BEGINNING INSTALLATION

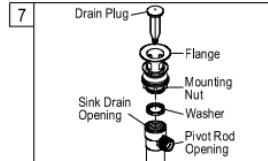
1. Flush plumbing lines to clear any debris.
2. Shut off both supply lines after flushing.



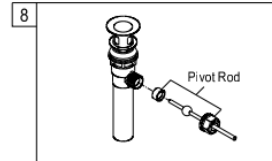
1. Shut off hot and cold water supply under sink. Plug sink drain with cloth to avoid losing small parts. Remove old faucet.



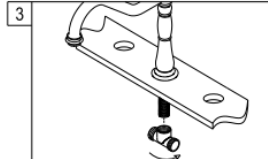
2. Install new faucet shank through the center hole of sink. Place mounting washer on spout shank and attach with spout shank locknut.



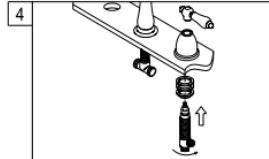
7. Install flange body up through the drain opening, hold the drain flange body in position with pivot nut opening facing the back of sink and hand tighten the mounting nut.



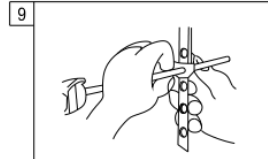
8. Place pivot rod into pivot rod opening. Slide pivot nut over pivot rod and thread it on the drain body. Tighten firmly.



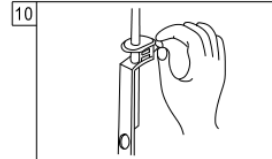
3. Apply Teflon tape to threads on spout shank. Attach spout tee on the spout shank.



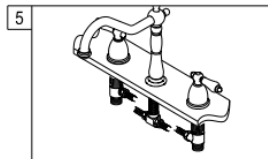
4. Hold the handles in proper position. Make sure that the top of the faucet handle is 5/8" above the top of the sink. Mount the metal washer and locknut from underneath the sink. Then reposition escutcheons as necessary to a desired height.



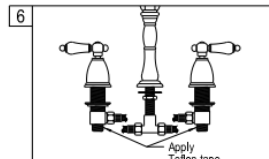
9. Guide the pivot rod through one of the holes on the lift rod strap and secure it with the spring clip. Then adjust the height of the lift rod by resetting the clevis screw.



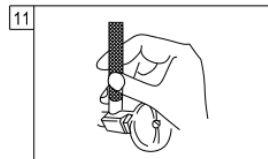
10. With lift rod in position on the faucet, insert lift rod through lift rod strap and secure with the clevis screw.



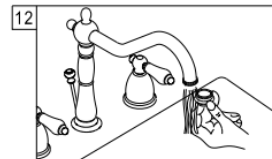
5. Apply Teflon tape to all male threads. Connect the flexible tubes from the supply shank side port.



6. Apply Teflon tape to inlet shanks and connect supply lines.

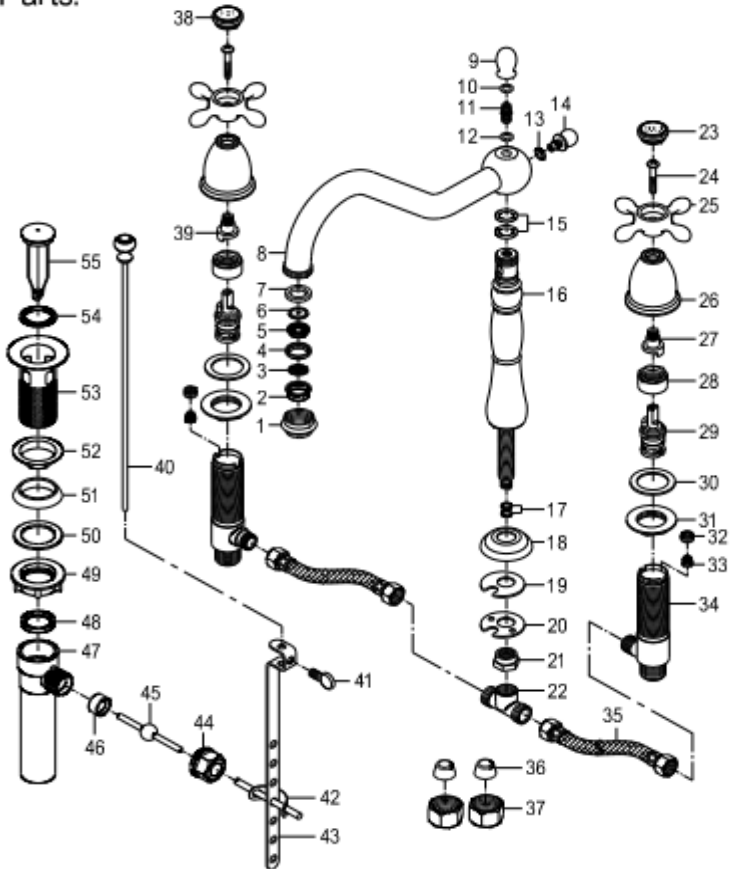


11. Turn on water supply valves and check for leaks, especially all supply line connections.



12. Remove aerator and turn on both hot and cold valves. Let water run for at least one minute.

Parts:



Replacement Parts:



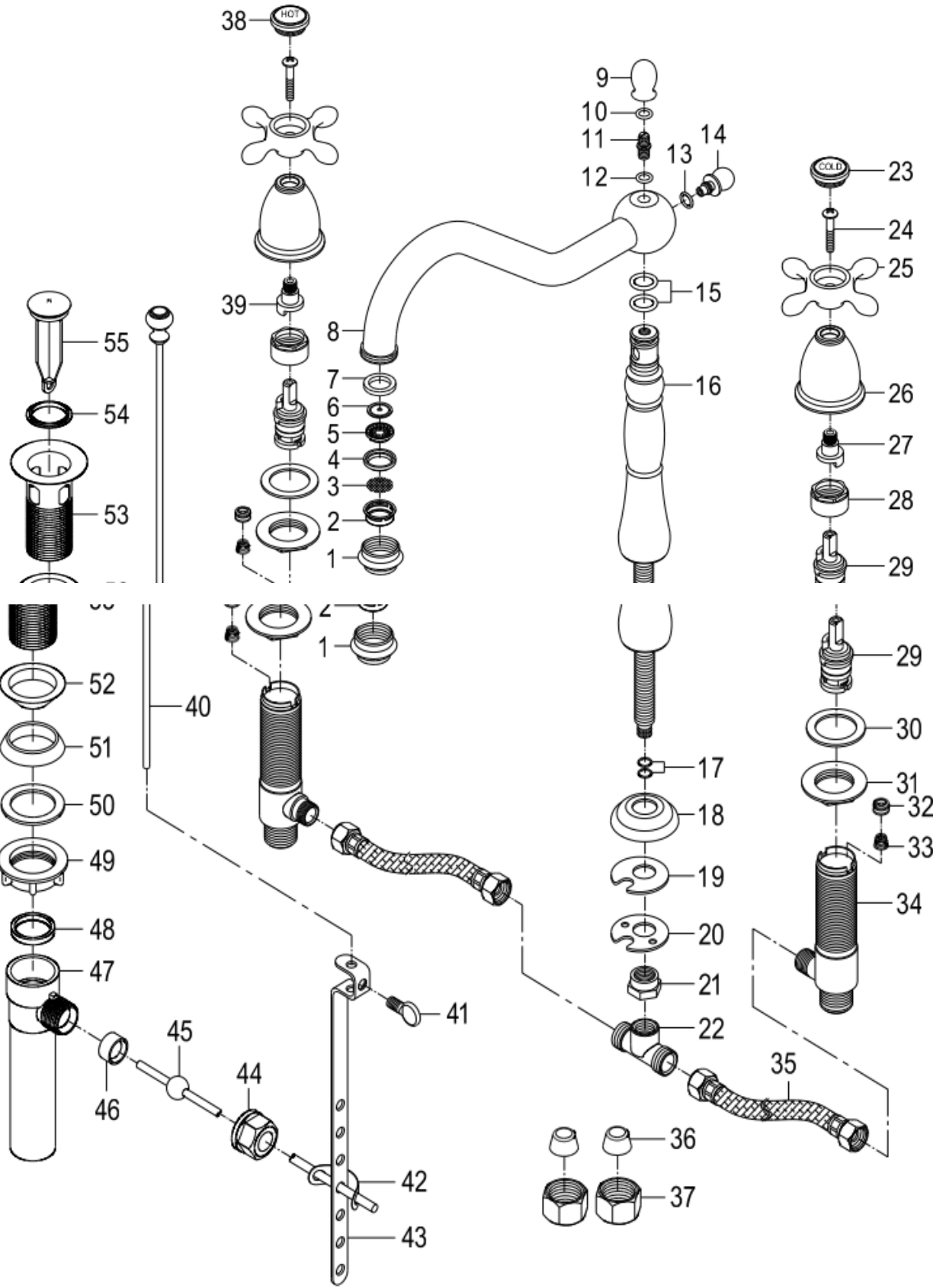
Cartridge: KBRP101C

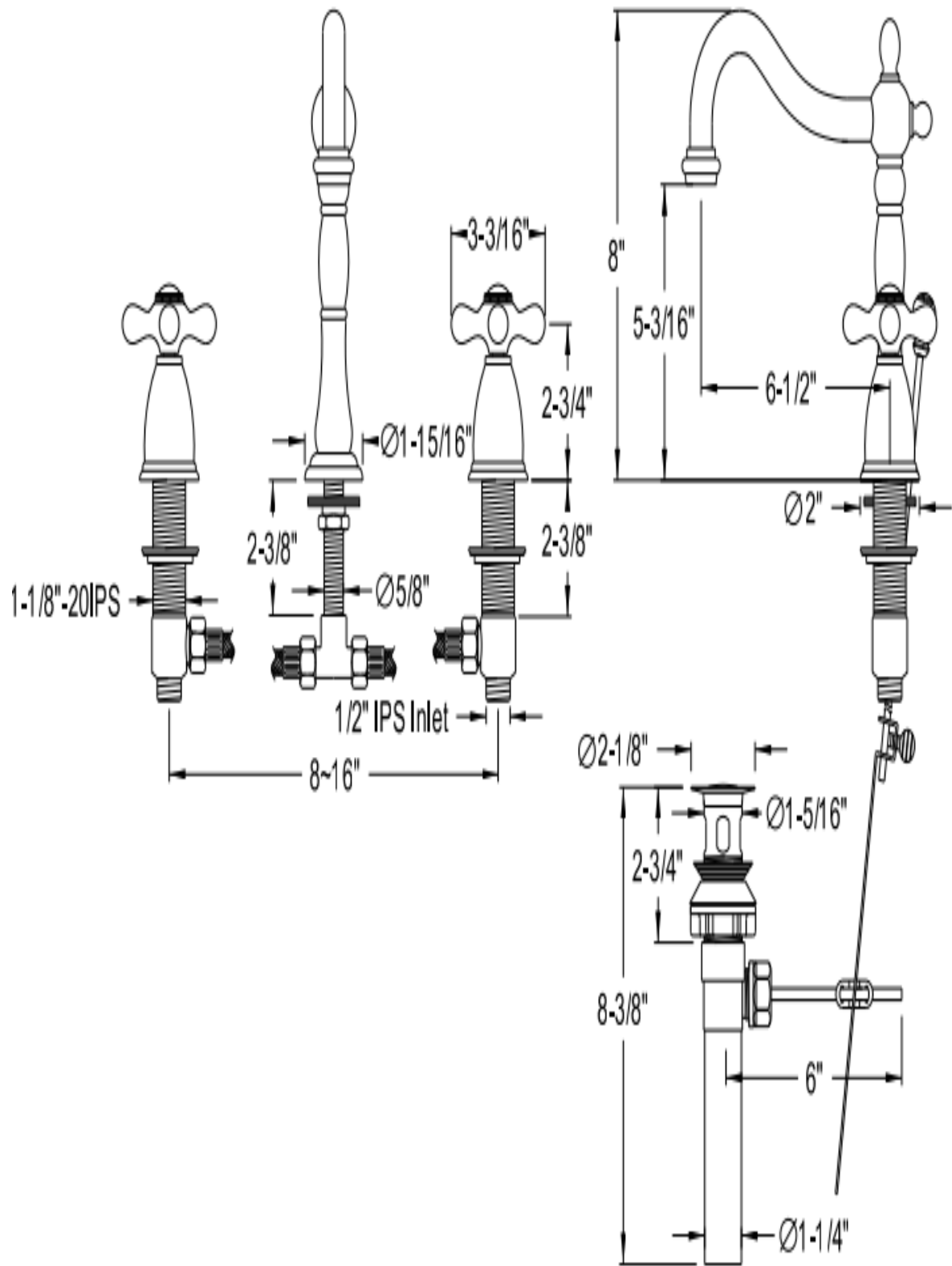


Hot Handle: KBH1791 AXH



Cold Handle: KBH1791 AXC





INSTRUCTIONS

- Before installing, read entire Widespread Faucet Installation Instructions. Observe all local building and safety codes.
- For the following installation instructions for your new Widespread Faucet it is assumed that any old fixtures have been removed and any repairs or modifications to the water supply have been completed.
- Unpack and inspect the product for any shipping damages. If you find damages, do not install. Contact Customer Service, If you need assistance or have questions while installing your Widespread Faucet, contact Customer Service.

TOOLS AND MATERIALS:

- Adjustable Wrench
- Silicone Sealant
- Damp Cloth

INSTALLATION

1. If your faucet comes with the brass T attached to the faucet body, unthread and remove the T and associated hardware.
2. Thread the silver mounting washer and rubber sealing gasket on the faucet body.
3. Apply a bead of silicone sealant to the underside of the spout, or faucet base, and thread through the center mounting hole.
4. Thread the mounting hardware and brass T onto the spout pipe and hand-tighten to secure.
5. Check to make sure the faucet is properly aligned and adjust as needed. When the faucet is in the proper position, finish tightening mounting hardware with your adjustable wrench. Tip: Make sure that the T outlets are aligned at an angle to allow maximum clearance for water connections.
6. Wipe away any excess sealant around the faucet base using your damp cloth.
7. Assemble the handles by screwing the lock nuts down to the end of the handle bodies. If handles are assembled move on to step 8.
8. Insert the handle bodies up through the mounting holes. Thread the plastic slip washers and rubber sealing gaskets onto the handle bodies to secure.
9. Hand tighten to attach the hot and cold flexible water feed tubes to the handle bodies and brass T. Give a $\frac{1}{4}$ turn with pliers or wrench, but don't over tighten. (Hot water is always on the left and cold water is always on the right.) Curve tubes as necessary to ensure there are no kinks or knots.

This General diagram and installation instructions are not intended for any specific model, but is presented as general guideline for Installations!