

31" Stainless steel Chrome Brushed Waterfall Rainfall LED Shower Head

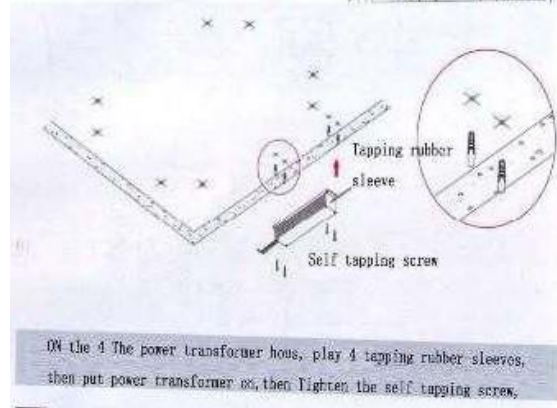
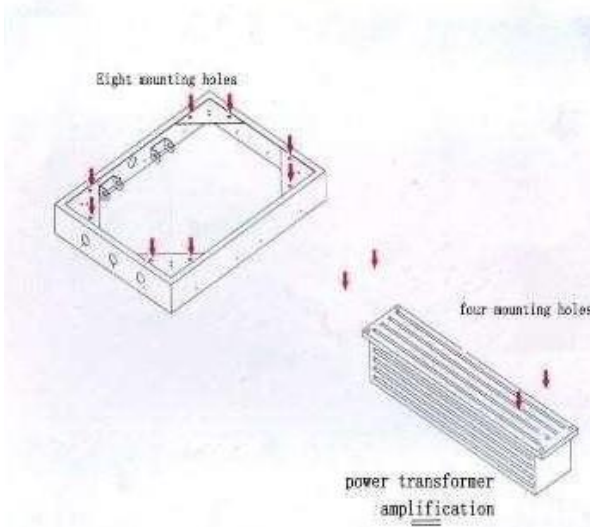
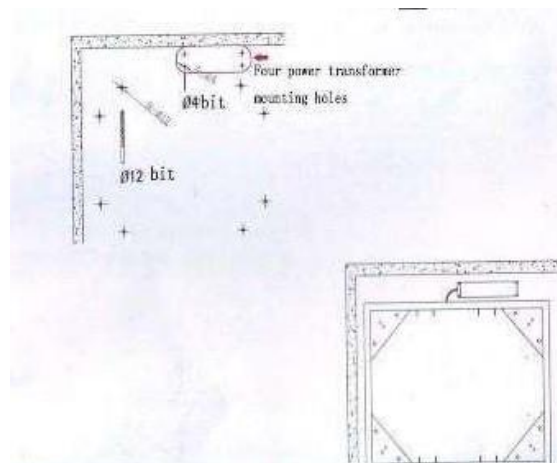
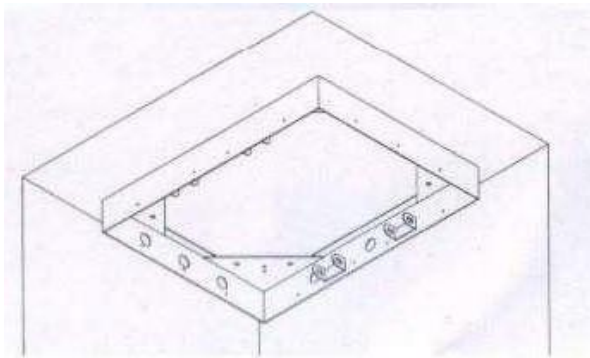
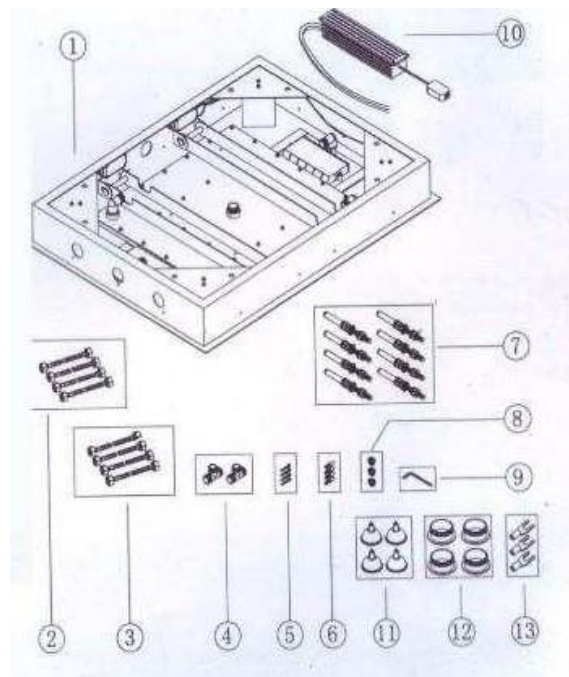
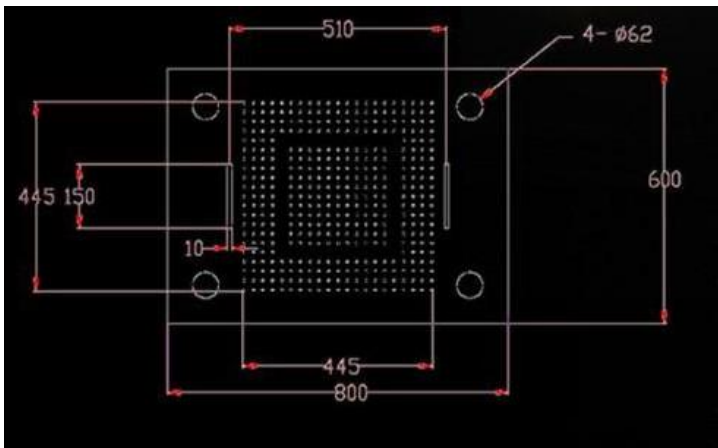
304 stainless steel mirror surface

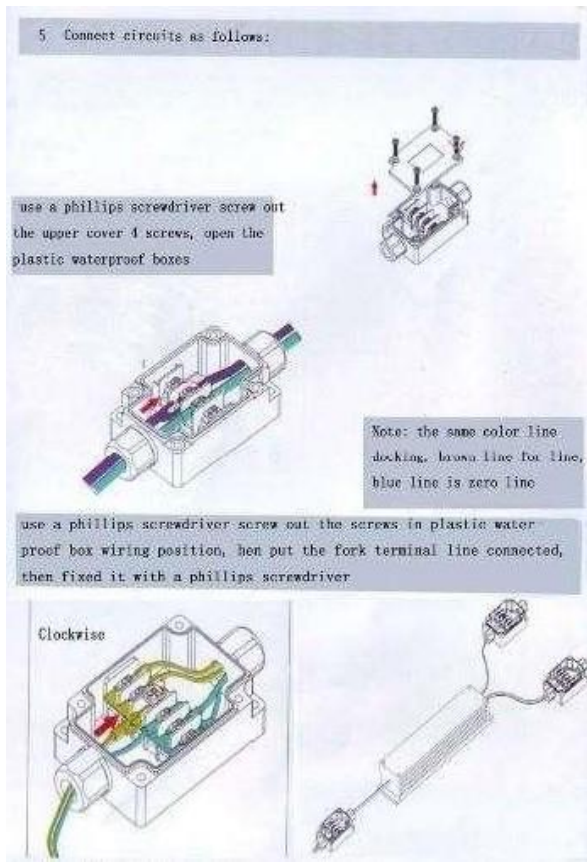
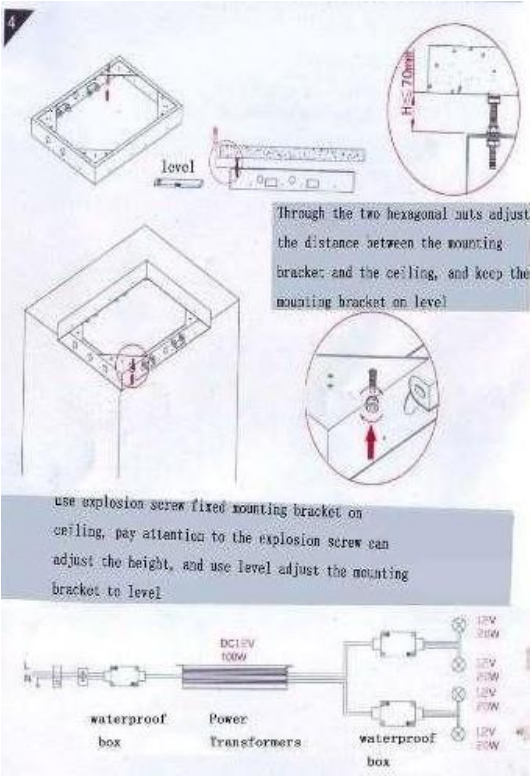


ceiling mounted light shower head
600*800mm embeded ceiling rain shower

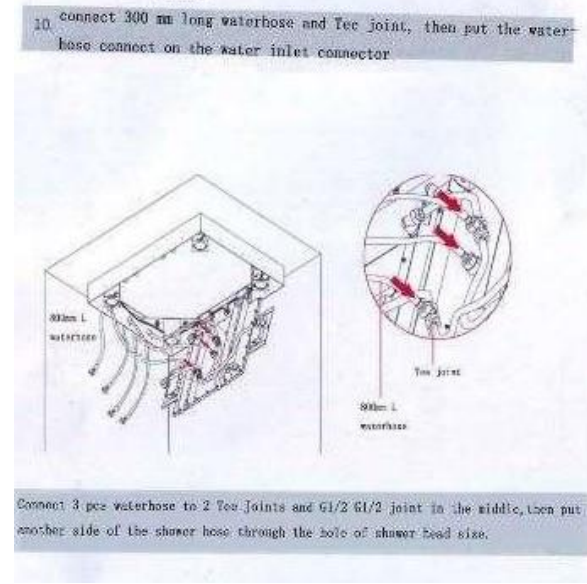
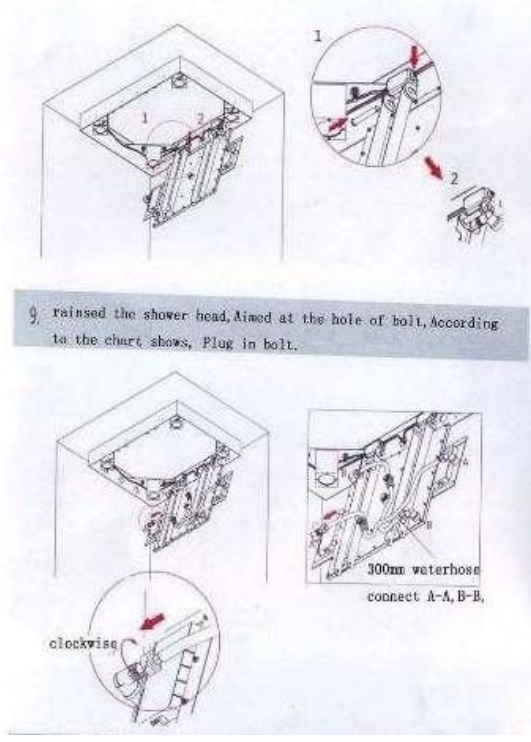


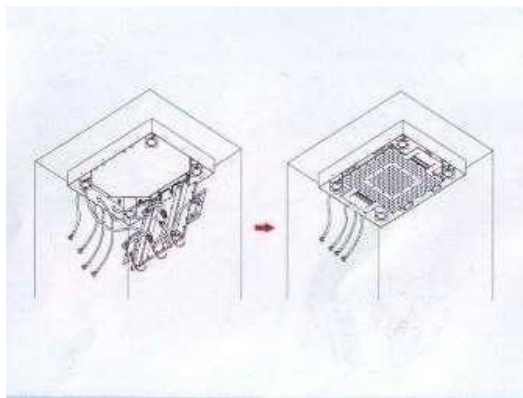
spare parts



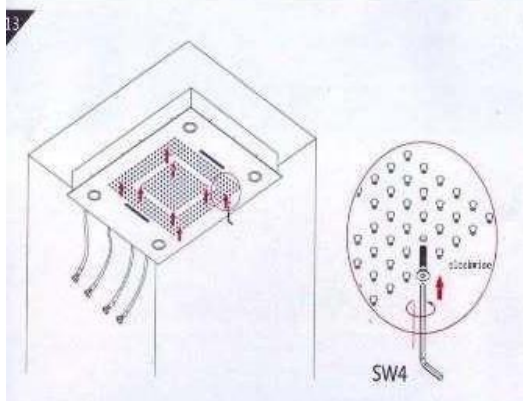


According to the circuit diagram as shown in step 5, then connected plastic waterproof case, please note that the same color of the wire when connect circuit to docking

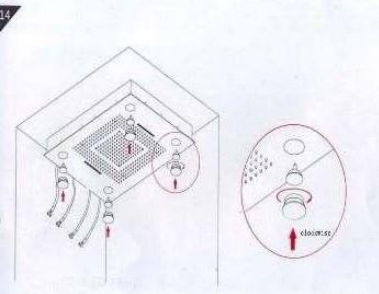




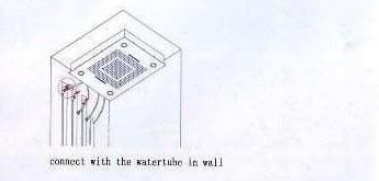
12 cover the shower body, and loaded the bolt



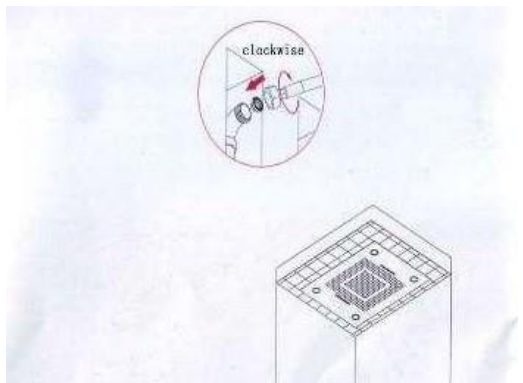
13 install the decorative panel, use SW4 hexagon wrench tighten



14 Fitted four large cap, then screw up 4 decoration cover.

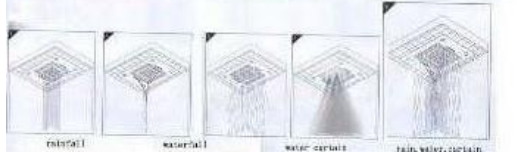


connect with the water tube in wall



Note: 1 before connect water hose and water tube, cleaning the pipes, prevent impurities from water pipes clogging flower is aspersed when connect water tube, put a 61/2 μ filternet in water hose, filtering impurities

15 connect 3 water hose in the water tube in wall.



rainfall waterfall water curtain rain water curtain

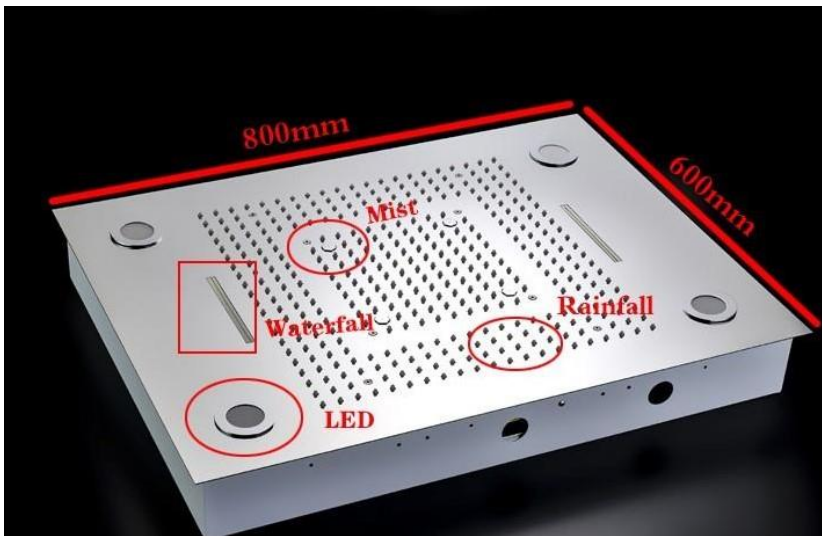
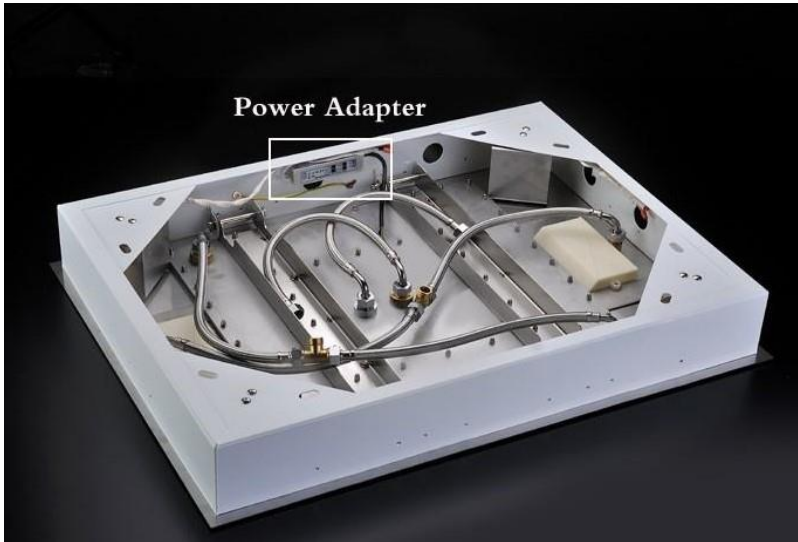




mistfall



multiple



It requires power supply

Input 100-250v (60hz)

Output 12vdc